

Uptown Albuquerque 2501 San Pedro Dr. NE



Demographics

1 Mile

3 mile

5 mile

Population	17,938	163,731	351,981
Med. Income	\$43,826	\$39,499	\$41,743
Day Population	15,902	106,814	251,027

Please contact us for leasing opportunities



Available

First Floor

- 100 SF or 125 SF | \$110 or \$125/Mo

Second Floor

- 100% occupied



Surroundings Info

- Across from Coronado Mall. Near many restaurants.
- Wi-Fi included.
- Located in the heart of the Uptown Submarket.
- Monument signage.
- Locally owned and managed.



Contact

Jazmin Godoy

505.884.3578

Jazmin@PetersonProperties.net

PetersonProperties.net

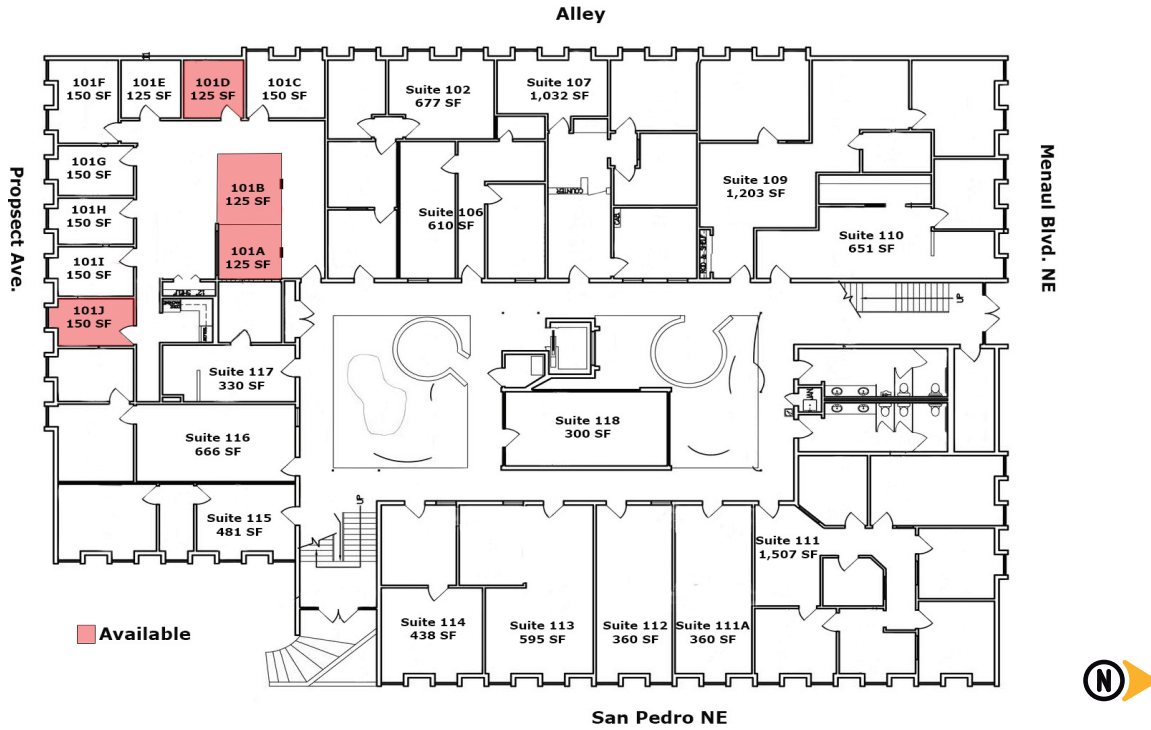
[/petersonpropertiesllc](https://www.facebook.com/petersonpropertiesllc)

[/petersonpropertiesllc](https://www.linkedin.com/company/petersonpropertiesllc)

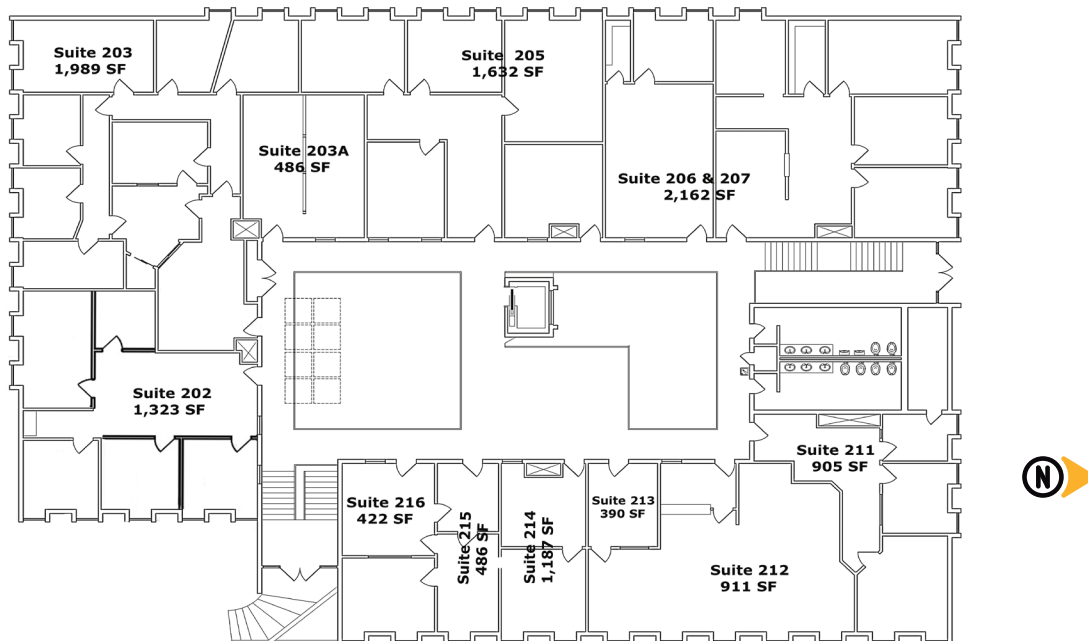
[/peterson.properties](https://www.instagram.com/peterson.properties)



First Floor - Site Plan



Second Floor - Site Plan



Jazmin Godoy

Contact us

505.884.3578

Jazmin@PetersonProperties.net

