



Central & 12th

Office, Retail or Restaurant Space

Albuquerque, NM - Downtown
1121, 1123 & 1125 Kent Avenue NW



Huge Surrounding
Population



New Parking Lot



Active Nightlife
Area



HUB Zone
qualified location

Please contact us for leasing opportunities

Demographics


	1 Mile	3 mile	5 mile
Population	12,327	98,038	248,046
Med. Income	\$35,393	\$34,510	\$39,299
Day Population	35,565	110,677	204,126

Surroundings Info

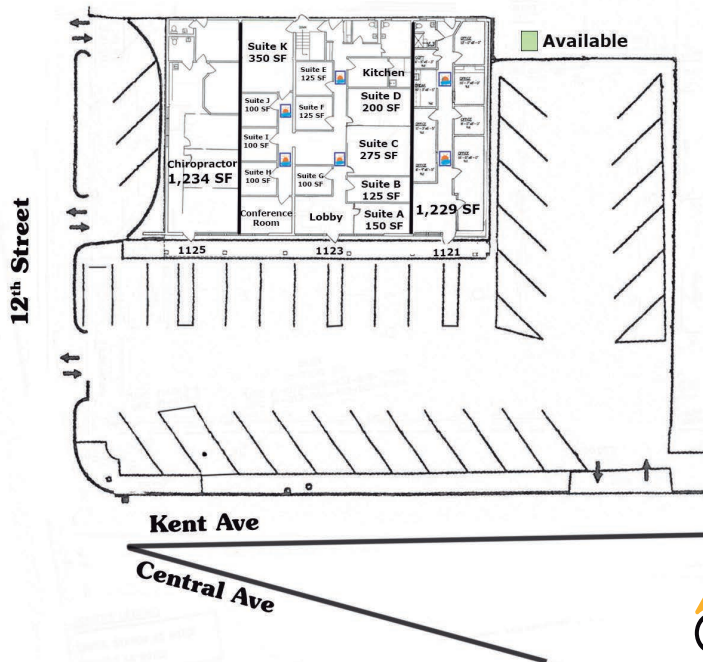
- High Visibility.
- Free WiFi + Secure Access.
- Locally owned and managed.



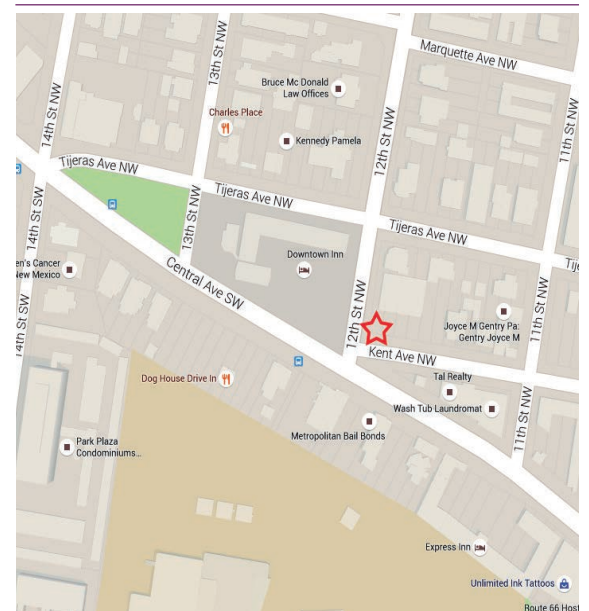
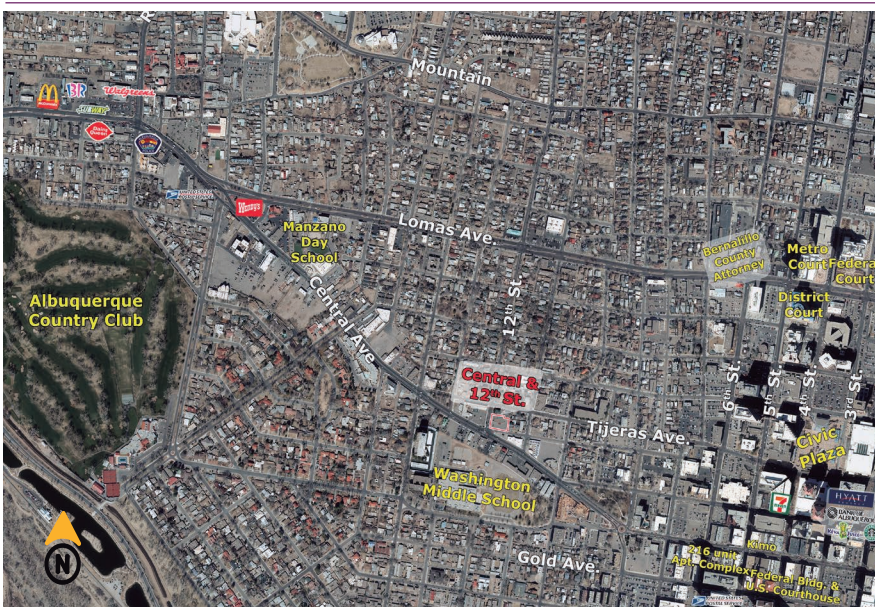
Contact

 Vanessa Valadez
 505.884.3578
 Vanessa@PetersonProperties.net

 PetersonProperties.net
 [/petersonpropertiesllc](https://www.facebook.com/petersonpropertiesllc)
 [/petersonpropertiesllc](https://www.instagram.com/petersonpropertiesllc)
 [/peterson.properties](https://twitter.com/peterson.properties)



Please contact us for leasing opportunities



Contact us

 Vanessa Valadez

 505.884.3578

✉ Vanessa@PetersonProperties.net

