



McMahon Marketplace

New Shops

Albuquerque, NM



Demographics 1 Mile 3 mile 5 mile Available

Population	8,843	81,723	146,145
Med. Income	\$67,269	\$66,151	\$66,127

● 2,602 SF | \$5,850/Month

Please contact us for leasing opportunities

Surroundings Info

- Anchored by CVS Drugstore, McDonalds, Taco Bell, Anytime Fitness, Starbucks and Tractor Brewing Company.
- Underserved population.
- A 20-acre medical/retail plaza is underway opposite the location of Presbyterian Hospital; hospital 1 mile north of site.
- A project in Los Diamantes will create 450 homes, 70-acre business park and school is expected to be completed during 2020.
- 26,800 cars per day on Unser Blvd and 18,600 car per day on McMahon Blvd.
- New building space available now.
- Locally owned and managed.

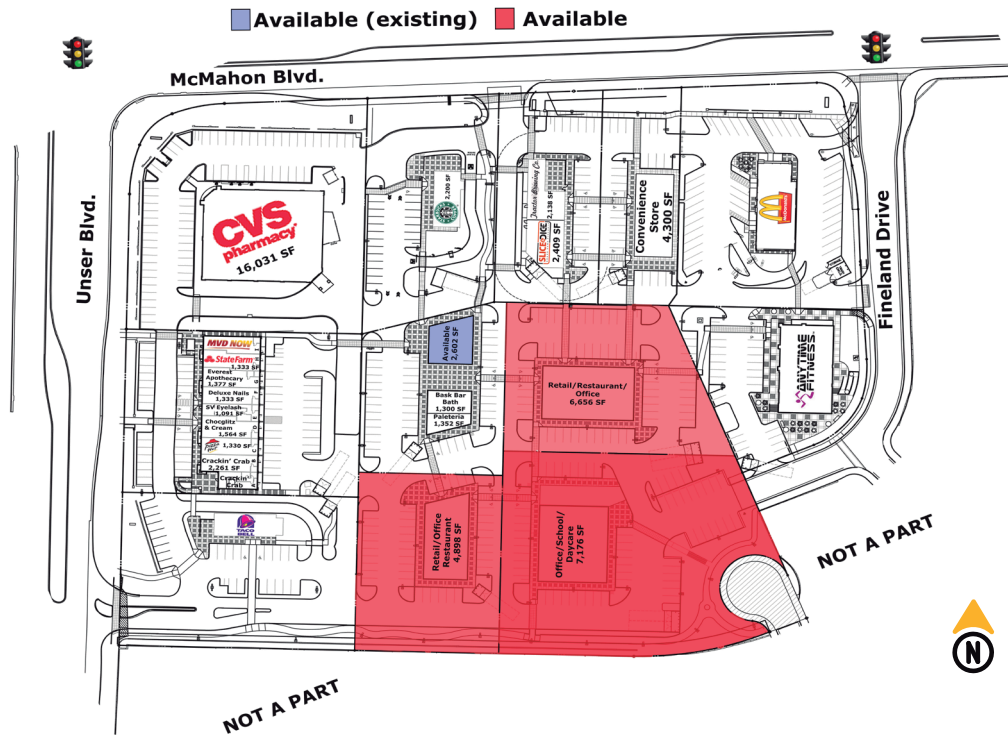


Contact

 Jazmin Godoy
 505.884.3578
 Jazmin@PetersonProperties.net

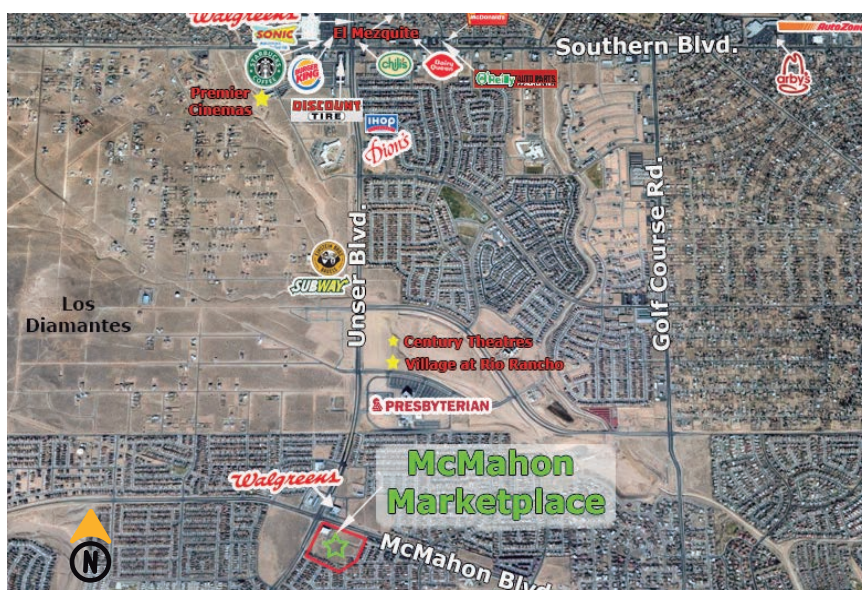
 PetersonProperties.net
 /petersonpropertiesllc
 /petersonpropertiesllc
 /peterson.properties

Site Plan



Please contact us for leasing opportunities

Aerial Map



5710 McMahon Blvd. NW,
Albuquerque, NM



Contact us

Jazmin Godoy

505.884.3578

Jazmin@PetersonProperties.net

