


Albuquerque  
6909 Menaul Blvd. NE



 Demographics	1 Mile	3 mile	5 mile
Population	13,662	148,889	318,784
Med. Income	\$45,489	\$41,296	\$43,655
Day Population	15,005	88,770	234,281

Please contact us for leasing opportunities

### Available

- Commercial Space
- 100% occupied

### Surroundings Info

- Anchored by Chili's Restaurant.
- Electronic reader board sign.
- Across the street from Coronado Mall.
- In the heart of Uptown retail & offices.
- Locally owned & managed.



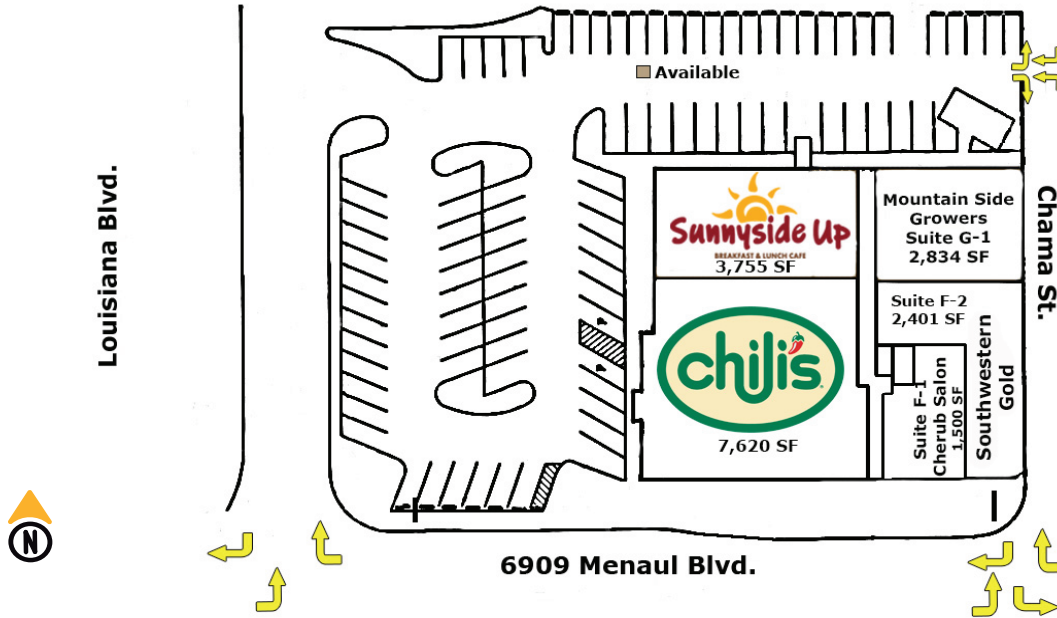
#### Contact

 Vanessa Valadez  
 505.884.3578  
 Vanessa@PetersonProperties.net

 [PetersonProperties.net](http://PetersonProperties.net)  
 /petersonpropertiesllc  
 /petersonpropertiesllc  
 /peterson.properties




### Site Plan



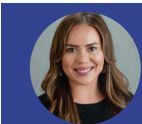
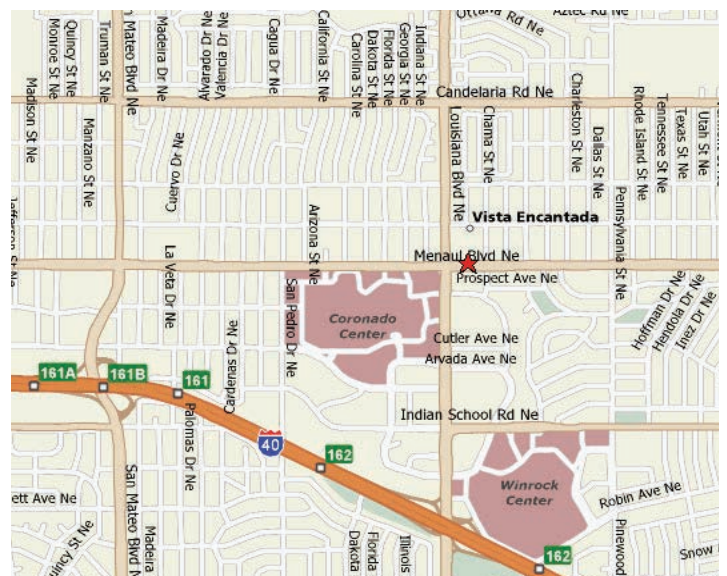
**Please contact us for leasing opportunities**



### Aerial Map

### Northeast corner of Menaul Blvd. & Louisiana Blvd. NE, Albuquerque, NM



 Vanessa Valadez

 505.884.3578

 [Vanessa@PetersonProperties.net](mailto:Vanessa@PetersonProperties.net)

