



1202-1204 Central Ave. SW

Office Spaces

Albuquerque, NM - Downtown
1202-1204 Central Ave. SW



Available

• 75 SF | \$90/Month



**Huge Surrounding
Population**



**Dedicated
Parking**



**Active Nightlife
Area**



**HUB Zone
qualified location**

Please contact us for leasing opportunities



Demographics

1 Mile

3 mile

5 mile

Population

12,327

98,038

248,046

Med. Income

\$35,393

\$34,510

\$39,299

Day Population

35,565

110,677

204,126



Surroundings Info

- High Visibility.
- Free WiFi + Secure Access.
- Convenient Access.
- Ample Parking.
- Locally owned and managed.



Contact

• Brighton Pope

• 505.884.3578

• Brighton.Pope@PetersonProperties.net

• **PetersonProperties.net**

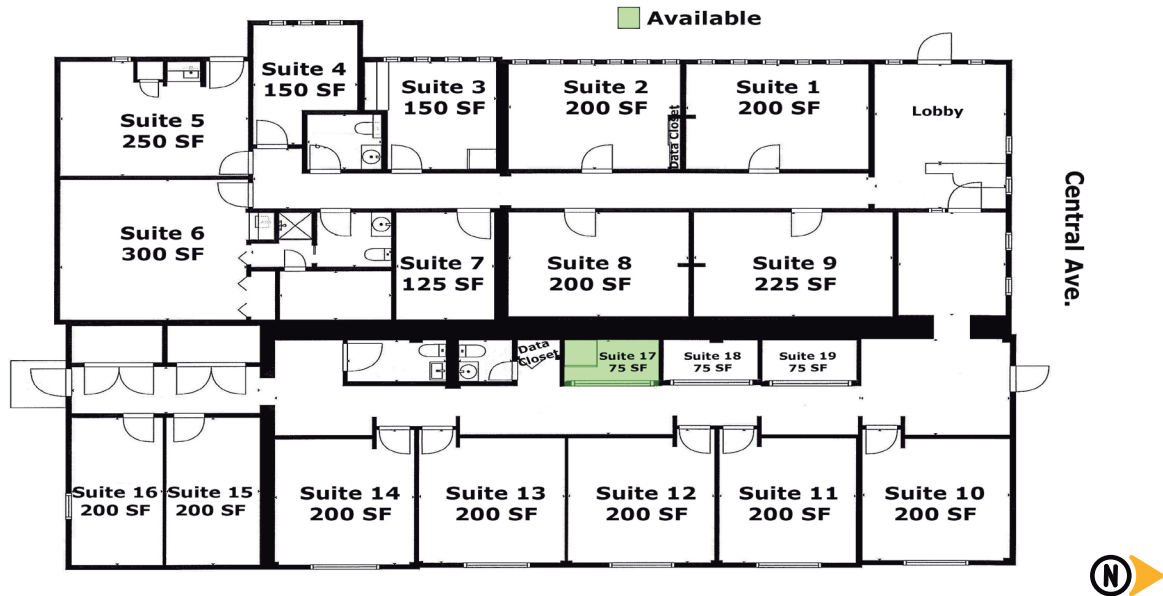
• /petersonpropertiesllc

• /petersonpropertiesllc

• /peterson.properties



Site Plan



Please contact us for leasing opportunities



Aerial Map



1202-1204 Central Ave. SW
Albuquerque, NM



Contact us

 Brighton Pope |  505.884.3578 |  Brighton.Pope@PetersonProperties.net

