



Montgomery Parkway

Office, Medical & Executive Suites

Albuquerque, NM - Far NE Heights
10401 & 10409 Montgomery Parkway NE



Demographics

1 Mile

3 mile

5 mile

	1 Mile	3 mile	5 mile
Population	13,364	140,998	319,333
Med. Income	\$43,826	\$39,499	\$41,743
Day Population	15,902	106,814	251,027

Please contact us for leasing opportunities



Available

10401 Montgomery Parkway

- Suite 2E | 135 SF
\$175/Month
- Food Truck Parking

10409 Montgomery Parkway

- Suite 202E | 250 SF
\$450/Month
- Suite 202H | 150 SF
\$290/Month



Surroundings Info

- In a well established area.
- Great street appearance with prominent signs.
- Several restaurants and pubs nearby.
- Secured building entry & exit.
- Locally owned and managed.
- Long term, successful cotenants.



Contact

Vanessa Valadez
 505.884.3578
 Vanessa@PetersonProperties.net

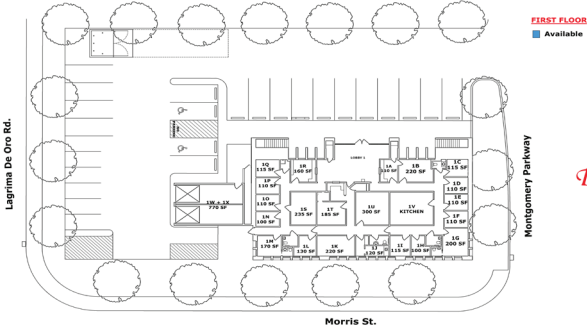
PetersonProperties.net

[/petersonpropertiesllc](https://www.facebook.com/petersonpropertiesllc)

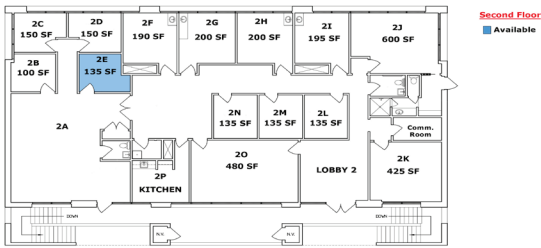
[/petersonpropertiesllc](https://www.linkedin.com/company/petersonpropertiesllc)

[/peterson.properties](https://www.instagram.com/peterson.properties)

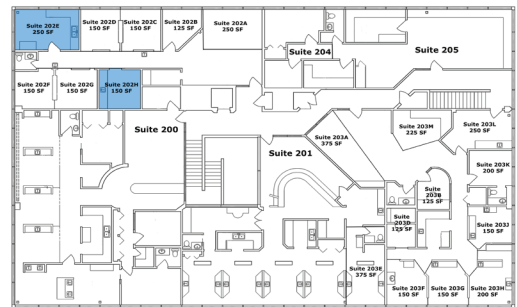
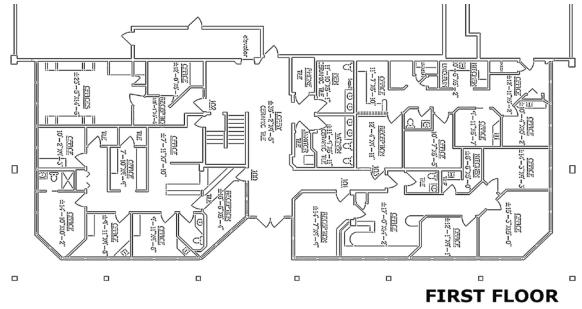
10401 Montgomery



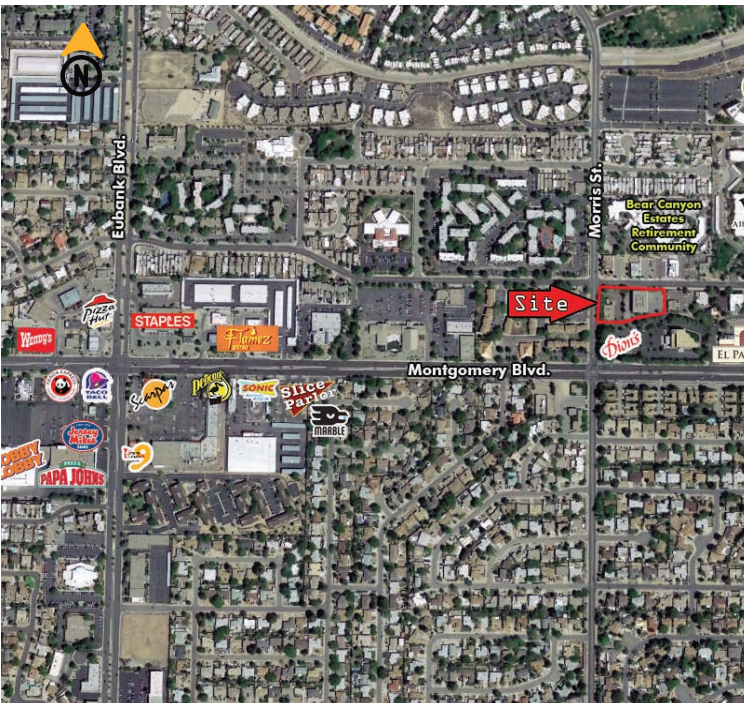
Dion's



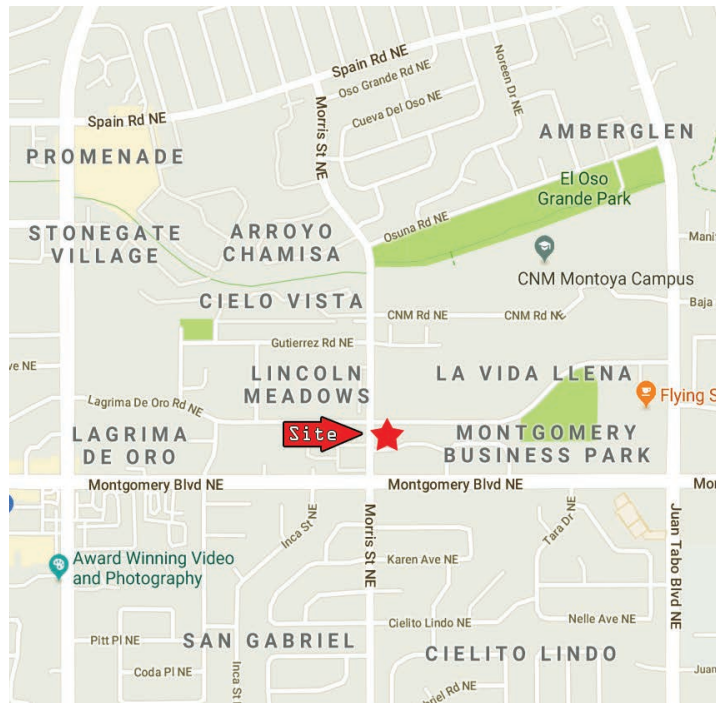
10409 Montgomery



Aerial Map



10401 & 10409 Montgomery Parkway NE, Albuquerque NM



Contact us

 **Vanessa Valadez**

 **505.884.3578**

 **Vanessa@PetersonProperties.net**

