

Albuquerque  
7710 Menaul Blvd. NE



 Demographics	1 Mile	3 mile	5 mile
Population	13,662	148,889	318,784
Med. Income	\$45,489	\$41,296	\$43,655
Day Population	15,005	88,770	234,281

Please contact us for leasing opportunities

### Available

- 100% occupied

### Surroundings Info

- In the heart of Uptown retail & offices.
- Locally owned & managed.
- Excellent visibility of storefront.
- Large traffic flow on Menaul Blvd.



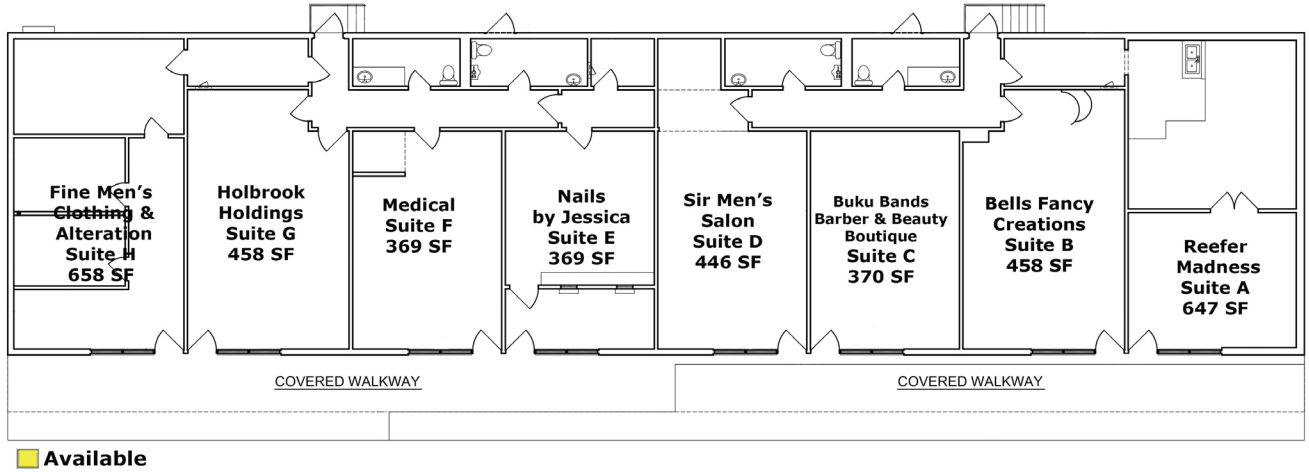
#### Contact

 Vanessa Valadez  
 505.884.3578  
 Vanessa@PetersonProperties.net

 [PetersonProperties.net](http://PetersonProperties.net)  
 /petersonpropertiesllc  
 /petersonpropertiesllc  
 /peterson.properties



### Site Plan



 Available



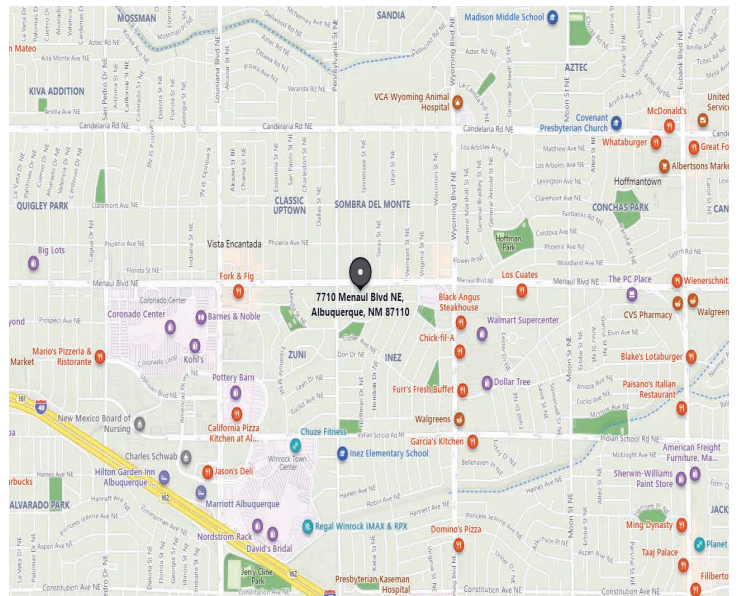
**Please contact us for leasing opportunities**



### Aerial Map




### 7710 Menaul Blvd. NE Albuquerque, NM 87110



**Contact us**  
 Vanessa Valadez |  505.884.3578 |  Vanessa@PetersonProperties.net

