



3901 Georgia NE

Office Space

Albuquerque, NM - Northeast Heights

3901 Georgia St. NE



Population	17,138	120,651	313,836
Med. Income	\$36,622	\$41,770	\$47,623
Day Population	5,628	93,549	212,330

Please contact us for leasing opportunities



Available

- 100% occupied
 - Suite A2B | 1,501 SF | \$1,700/Month
- Available in 30 days



Surroundings Info

- Popular office complex.
- Two exterior entrances.
- Plenty of on-site parking.
- Locally owned and managed.
- Close to many restaurant options.



Contact

• Brighton Pope
• 505.884.3578
• Brighton.Pope@PetersonProperties.net

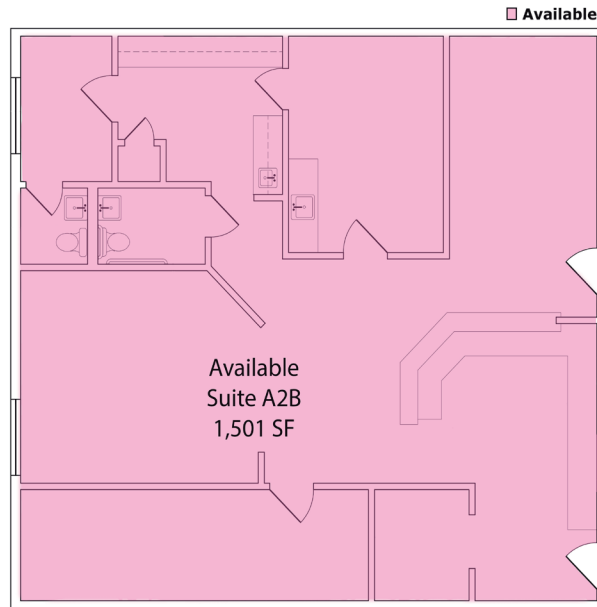
• PetersonProperties.net

• /petersonpropertiesllc

• /petersonpropertiesllc

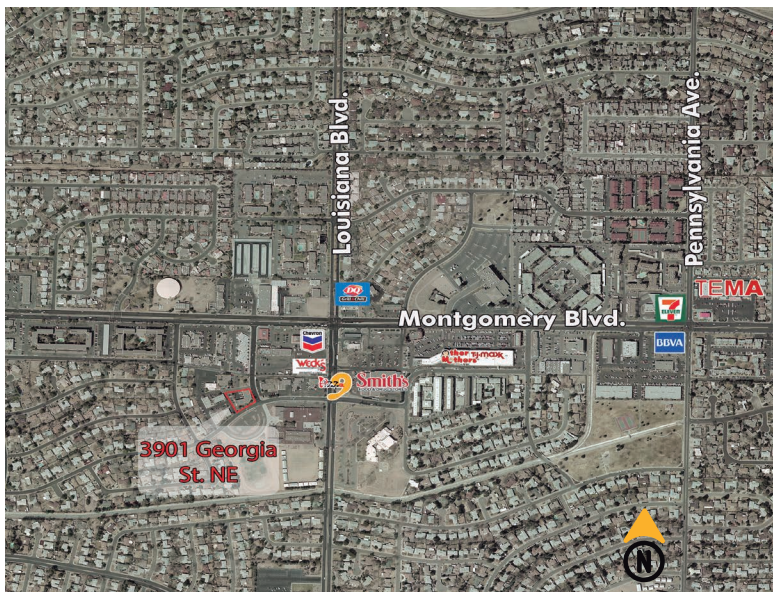
• /peterson.properties

Site Plan

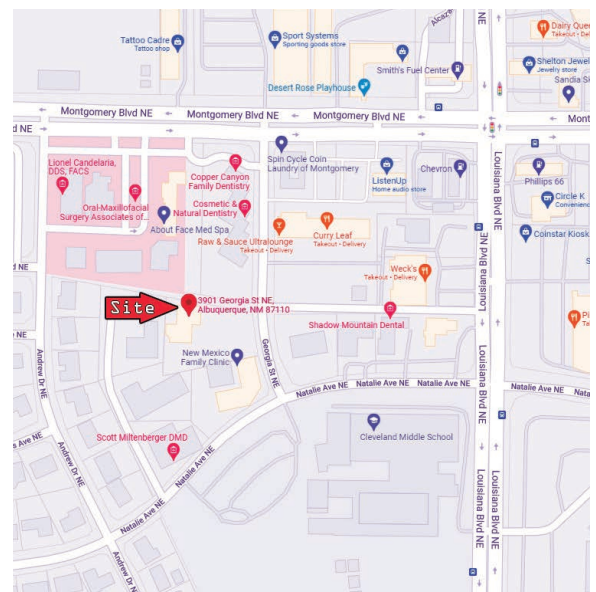


Please contact us for leasing opportunities

Aerial Map



Southwest corner of Montgomery & Louisiana Albuquerque, NM



Contact us



 Brighton Pope |  505.884.3578 |  Brighton.Pope@PetersonProperties.net

