



Autry Plaza

Office, Executive Suites & Drive thru

Uptown Albuquerque
1330 San Pedro Dr. NE



Demographics

1 Mile

3 mile

5 mile

Population	13,364	140,998	319,333
Med. Income	\$43,826	\$39,499	\$41,743
Day Population	15,902	106,814	251,027

Please contact us for leasing opportunities



Available

First Floor

- 100% occupied
- Drive- thru Available | 919 SF | call for price

Second Floor

- Suite 2050 | 250 SF | \$340/Month



Surroundings Info

- Conveniently located off San Pedro.
- Elevator, monument sign & updated lobby.
- Locally owned and managed.
- Food Truck Parking Available



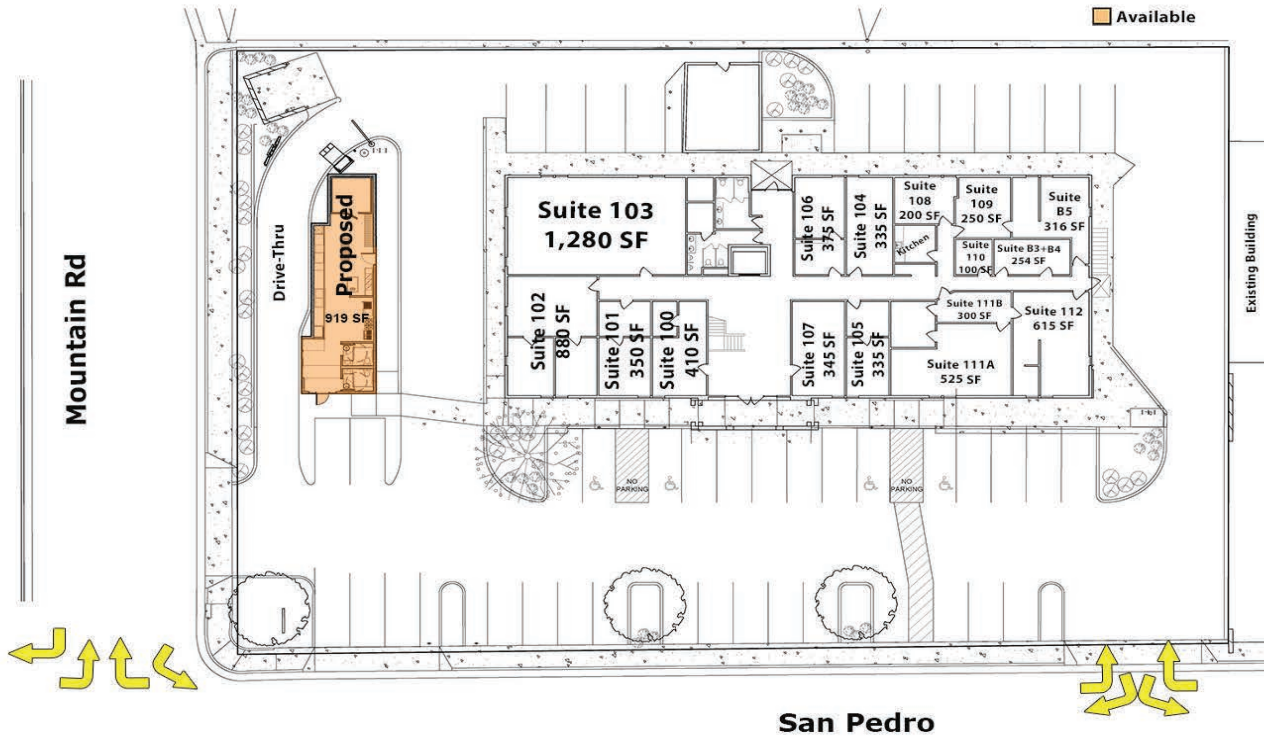
Contact

• Brighton Pope
• 505.884.3578
• Brighton.Pope@PetersonProperties.net

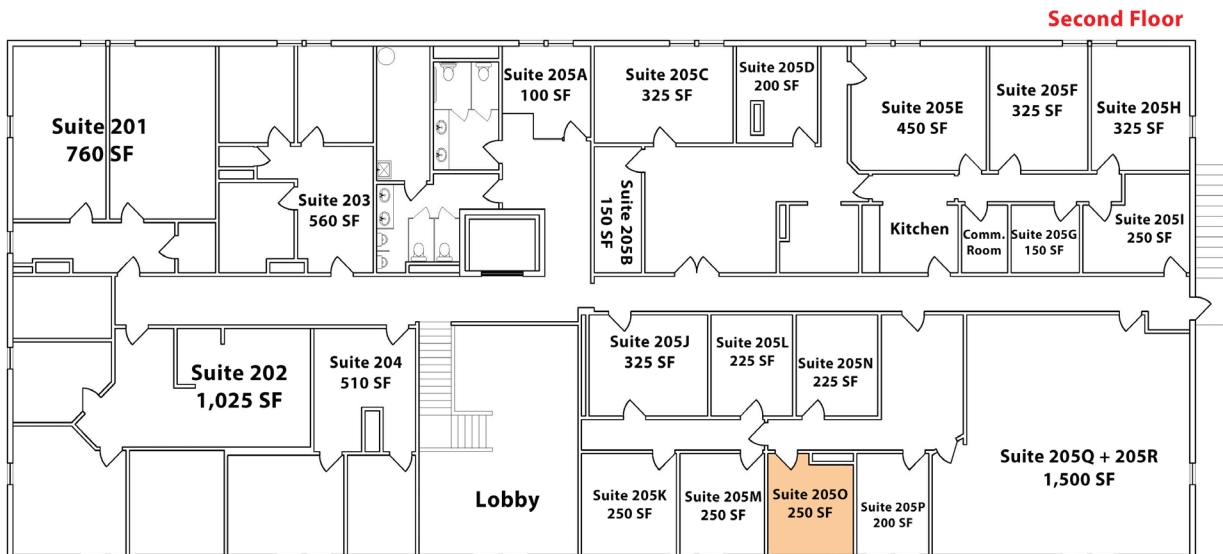
• PetersonProperties.net
• [/petersonpropertiesllc](https://www.facebook.com/petersonpropertiesllc)
• [/petersonpropertiesllc](https://www.linkedin.com/company/petersonpropertiesllc)
• [/peterson.properties](https://www.instagram.com/peterson.properties)



Floor Plan- 1st



Floor Plan- 2nd



Contact us

Brighton Pope

505.884.3578

Brighton.Pope@PetersonProperties.net

