



# Montgomery Parkway

Office, Medical & Executive Suites

Albuquerque, NM - Far NE Heights  
10401 & 10409 Montgomery Parkway NE



## Demographics

1 Mile

3 mile

5 mile

Population	13,364	140,998	319,333
Med. Income	\$43,826	\$39,499	\$41,743
Day Population	15,902	106,814	251,027

Please contact us for leasing opportunities



## Available

### 10401 Montgomery Parkway

- 100% occupied
- Food Truck Parking

### 10409 Montgomery Parkway

- 100% occupied



## Surroundings Info

- In a well established area.
- Great street appearance with prominent signs.
- Several restaurants and pubs nearby.
- Secured building entry & exit.
- Locally owned and managed.
- Long term, successful cotenants.



### Contact

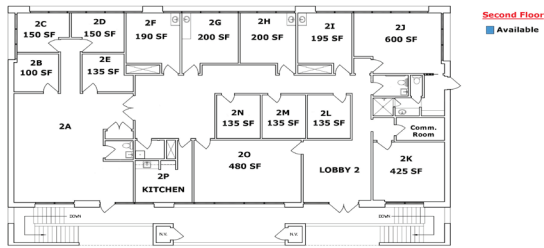
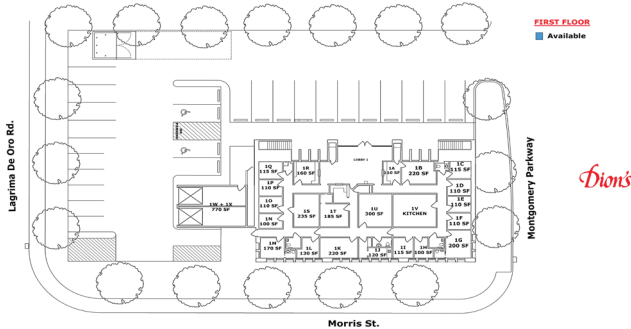
Vanessa Valadez  
505.884.3578  
Vanessa@PetersonProperties.net

PetersonProperties.net  
/petersonpropertiesllc  
/petersonpropertiesllc  
/peterson.properties

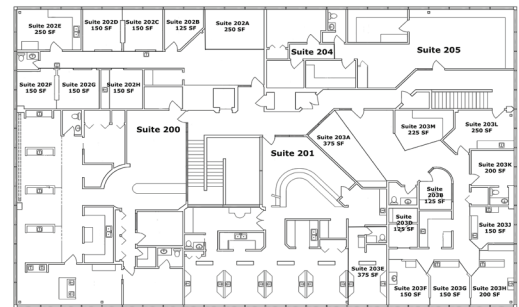
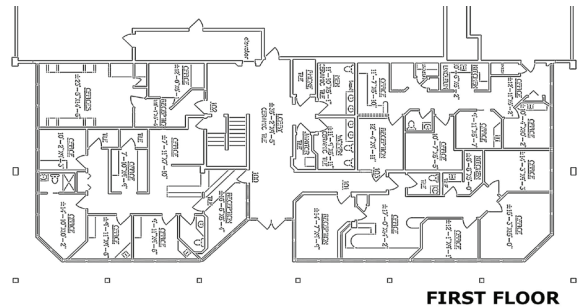
# Montgomery Parkway

## Office, Medical & Executive Suites

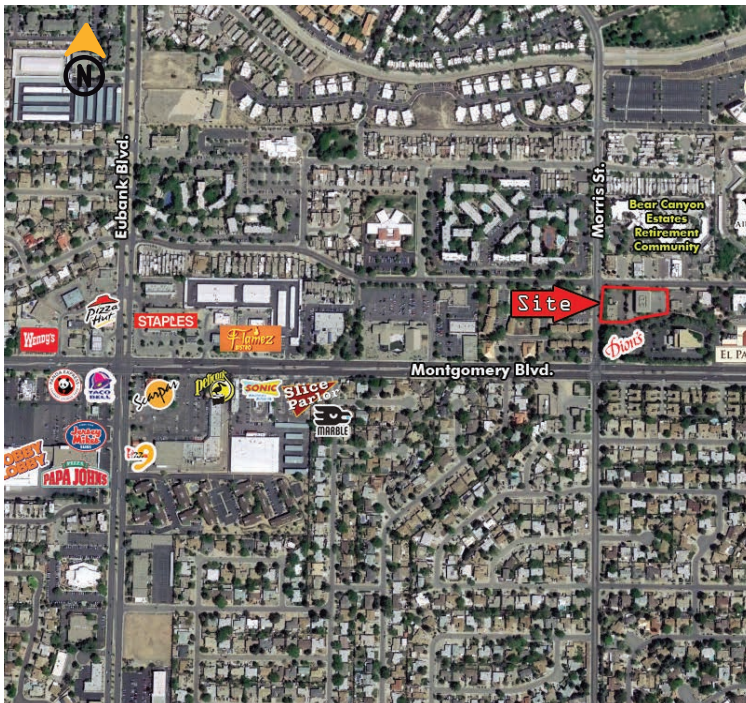
### 10401 Montgomery



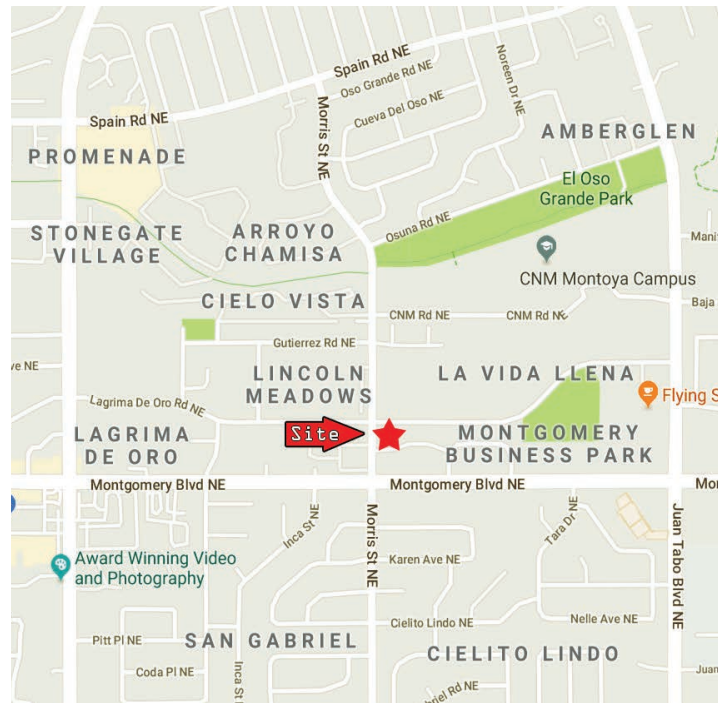
### 10409 Montgomery



### Aerial Map



### 10401 & 10409 Montgomery Parkway NE, Albuquerque NM



Contact us

Vanessa Valadez

505.884.3578

Vanessa@PetersonProperties.net

