

Albuquerque, NM - Northeast Heights

5809 Juan Tabo Blvd. NE



## Demographics

1 Mile

3 mile

5 mile

Population	14,690	110,659	225,802
Med. Income	\$68,280	\$68,068	\$56,908
Day Population	3,254	32,064	129,188

Please contact us for leasing opportunities



## Available

- Suite H | 2,713 SF | \$7,000/Month



## Surroundings Info

- Adjacent to Walgreens & Smith's Supermarket.
- Hard to penetrate far northeast heights area.
- Successful, long term co-tenants.
- Locally owned and managed.



### Contact

Vanessa Valadez

505.884.3578

Vanessa@PetersonProperties.net

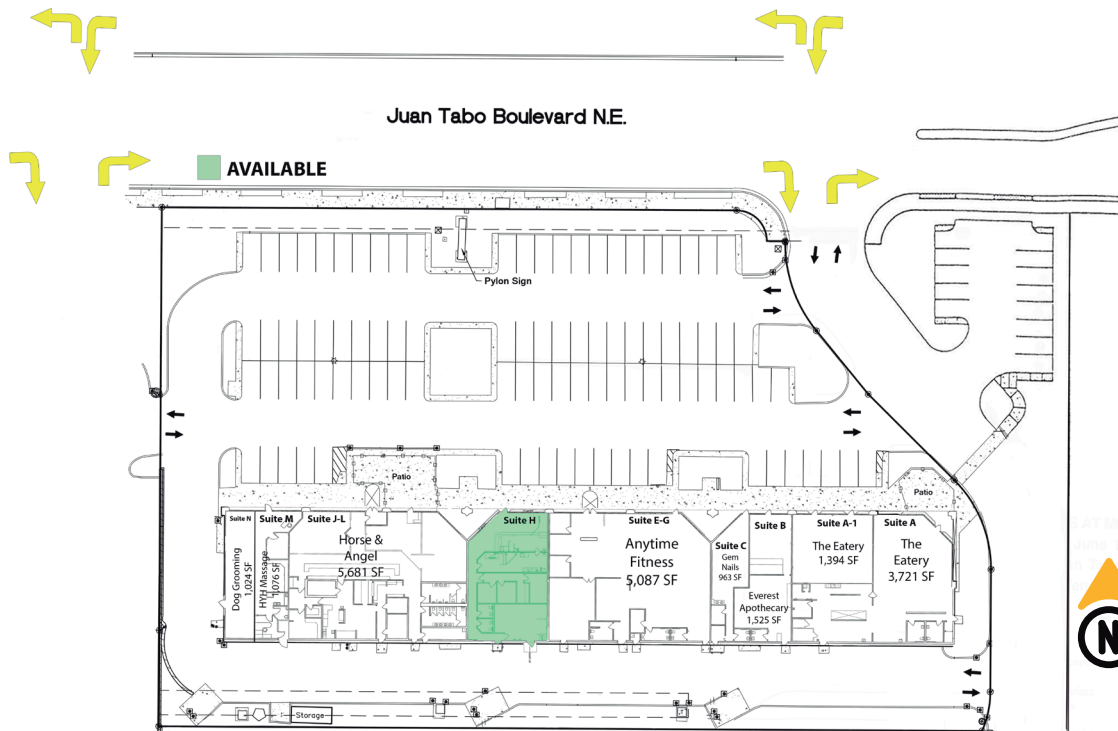
[PetersonProperties.net](http://PetersonProperties.net)

[/petersonpropertiesllc](https://www.facebook.com/petersonpropertiesllc)

[/petersonpropertiesllc](https://www.linkedin.com/company/petersonpropertiesllc)

[/peterson.properties](https://www.instagram.com/peterson.properties)

### Site Plan

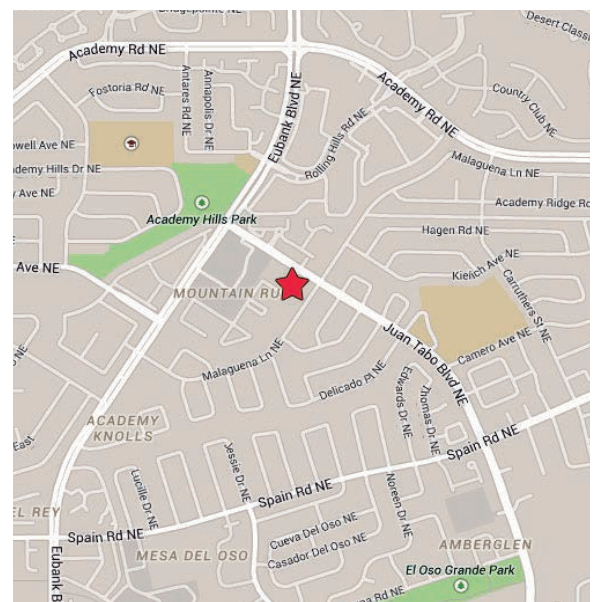


Please contact us for leasing opportunities

### Aerial Map



5809 Juan Tabo Blvd. NE  
Albuquerque, NM



Contact us



Vanessa Valadez

505.884.3578

Vanessa@PetersonProperties.net

