



# 1202-1204 Central Ave. SW

Office Spaces

Albuquerque, NM - Downtown  
1202-1204 Central Ave. SW



## Available

- 100% occupied



Huge Surrounding  
Population



Dedicated  
Parking



Active Nightlife  
Area



HUB Zone  
qualified location

Please contact us for leasing opportunities



## Demographics

1 Mile

3 mile

5 mile

Population	12,327	98,038	248,046
Med. Income	\$35,393	\$34,510	\$39,299
Day Population	35,565	110,677	204,126



## Surroundings Info

- High Visibility.
- Free WiFi + Secure Access.
- Convenient Access.
- Ample Parking.
- Locally owned and managed.



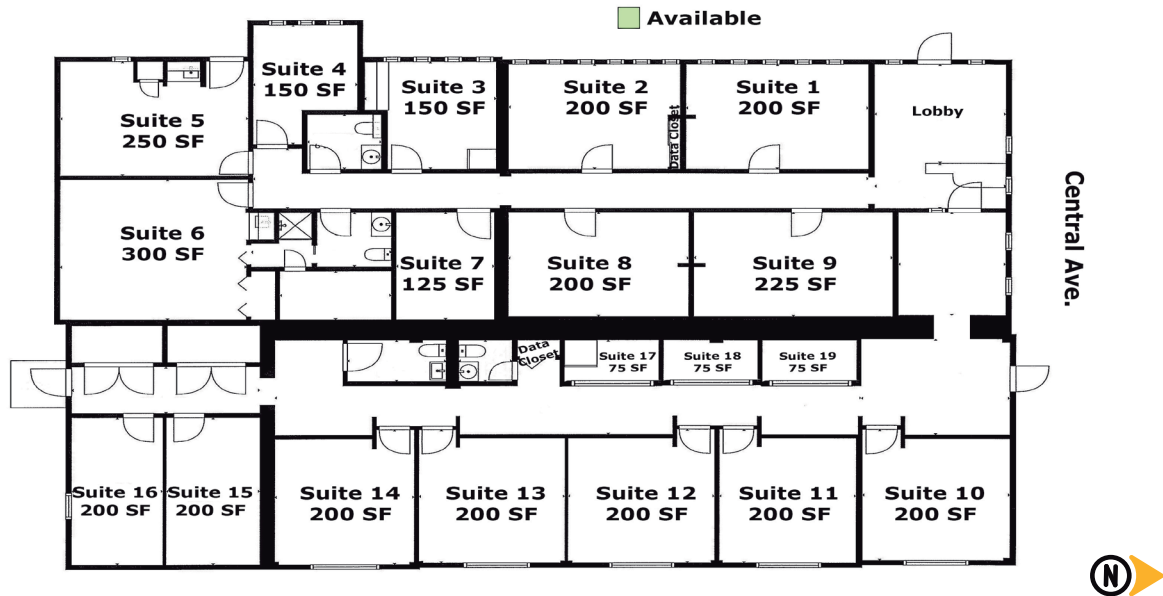
## Contact

● Brighton Pope  
● 505.884.3578  
● Brighton.Pope@PetersonProperties.net

● PetersonProperties.net  
● /petersonpropertiesllc  
● /petersonpropertiesllc  
● /peterson.properties



### Site Plan



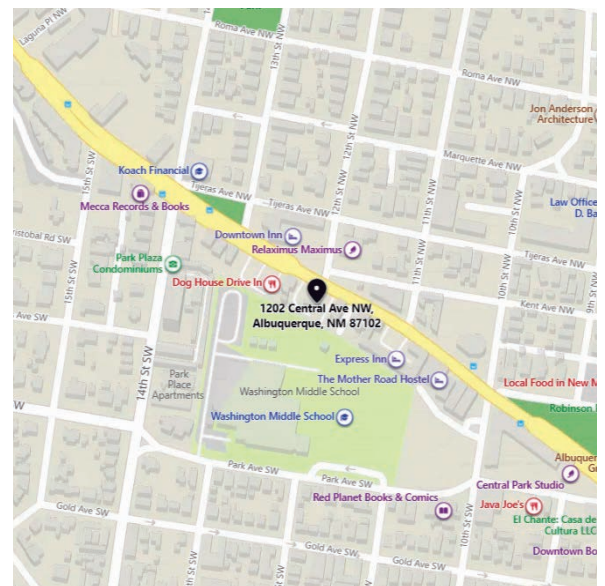
Please contact us for leasing opportunities



### Aerial Map



1202-1204 Central Ave. SW  
Albuquerque, NM



### Contact us

Brighton Pope | 505.884.3578 | Brighton.Pope@PetersonProperties.net

