

### Albuquerque, NM - Far NE Heights

10401 & 10409 Montgomery Parkway NE



#### Demographics

#### 1 Mile

#### 3 mile

#### 5 mile

Population	13,364	140,998	319,333
Med. Income	\$43,826	\$39,499	\$41,743
Day Population	15,902	106,814	251,027

Please contact us for leasing opportunities



#### Available

#### 10401 Montgomery Parkway

- Suite 1Q | 115 SF  
\$250/Month
- Food Truck Parking

#### 10409 Montgomery Parkway

- Suite 203A | 375 SF  
\$600/Month



#### Surroundings Info

- In a well established area.
- Great street appearance with prominent signs.
- Several restaurants and pubs nearby.
- Secured building entry & exit.
- Locally owned and managed.
- Long term, successful cotenants.



#### Contact

 Brighton Pope  
 505.884.3578  
 Brighton.Pope@PetersonProperties.net

 [PetersonProperties.net](http://PetersonProperties.net)

 /petersonpropertiesllc

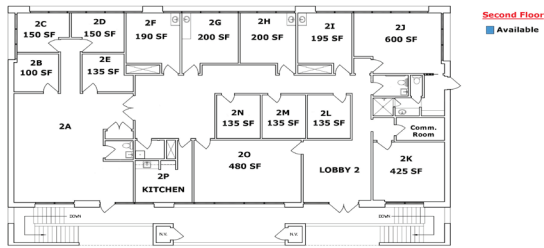
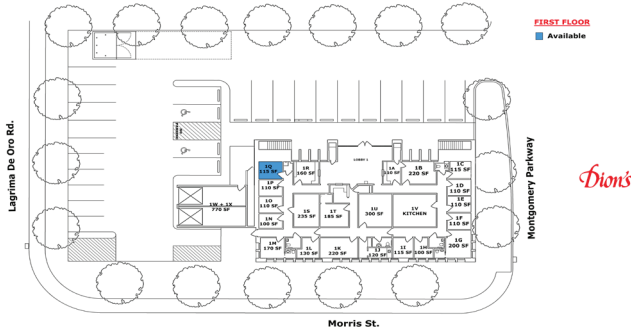
 /petersonpropertiesllc

 /peterson.properties

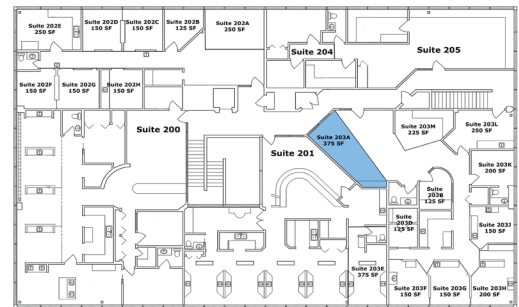
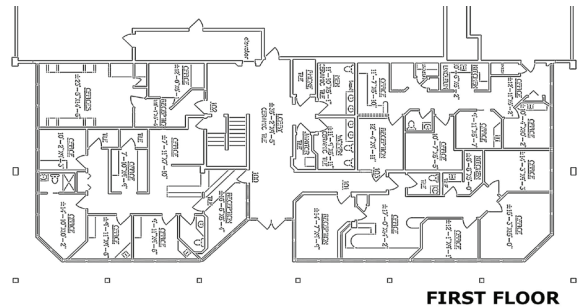
# Montgomery Parkway

## Office, Medical & Executive Suites

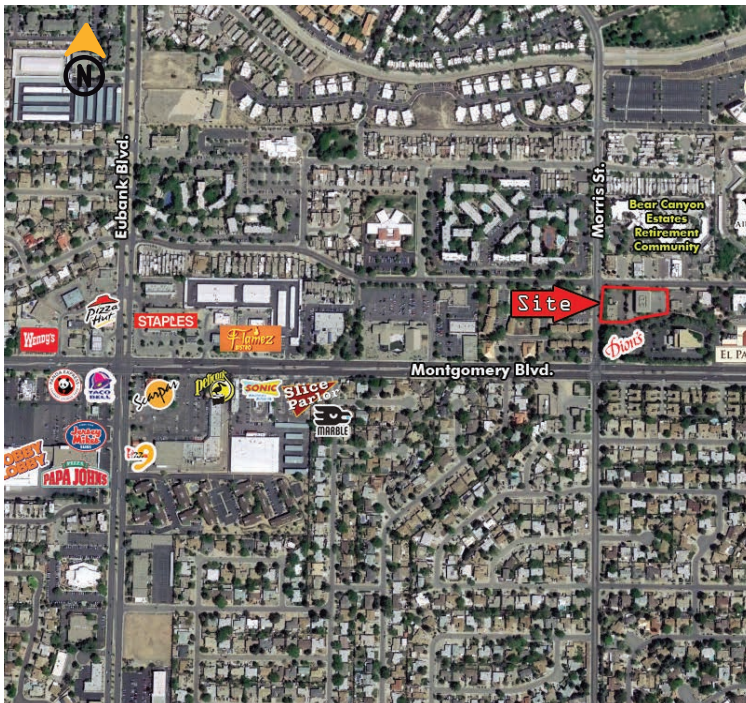
### 10401 Montgomery



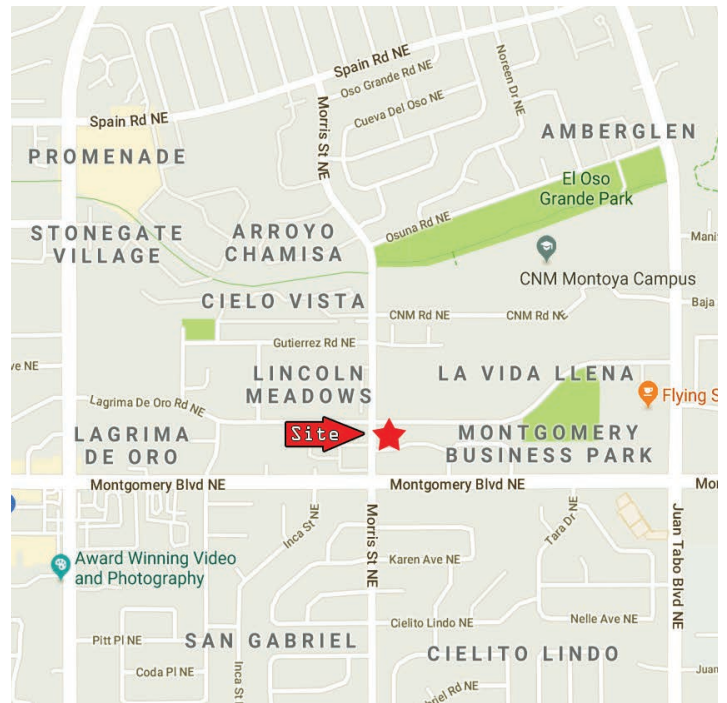
### 10409 Montgomery



### Aerial Map



### 10401 & 10409 Montgomery Parkway NE, Albuquerque NM



### Contact us

 Brighton Pope | 505.884.3578 | [Brighton.Pope@PetersonProperties.net](mailto:Brighton.Pope@PetersonProperties.net)

