

Albuquerque, NM - Far NE Heights

10401 & 10409 Montgomery Parkway NE



Demographics

1 Mile

3 mile

5 mile

Population	13,364	140,998	319,333
Med. Income	\$43,826	\$39,499	\$41,743
Day Population	15,902	106,814	251,027

Please contact us for leasing opportunities



Available

10401 Montgomery Parkway

- 110 SF or 115 SF
\$250/Month
- Food Truck Parking

10409 Montgomery Parkway

- Suite 203A | 375 SF
\$600/Month



Surroundings Info

- In a well established area.
- Great street appearance with prominent signs.
- Several restaurants and pubs nearby.
- Secured building entry & exit.
- Locally owned and managed.
- Long term, successful cotenants.



Contact

 Brighton Pope
 505.884.3578
 Brighton.Pope@PetersonProperties.net

 PetersonProperties.net

 /petersonpropertiesllc

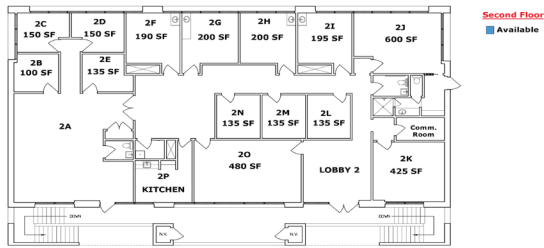
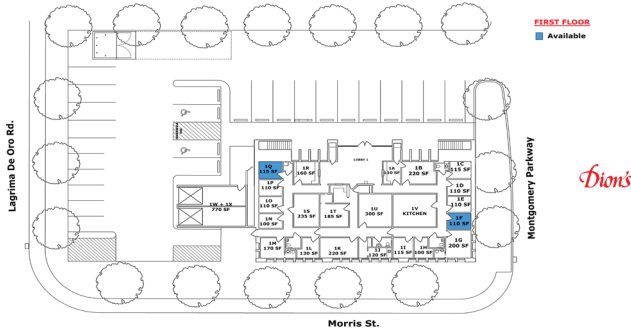
 /petersonpropertiesllc

 /peterson.properties

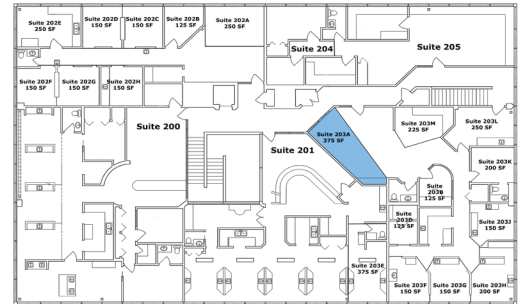
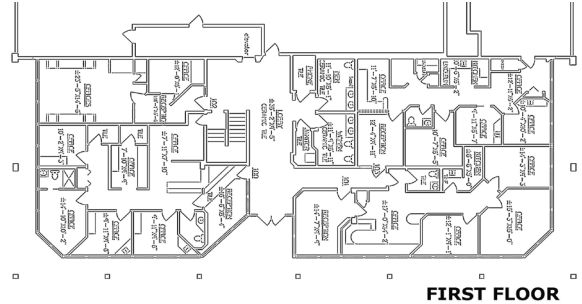
Montgomery Parkway

Office, Medical & Executive Suites

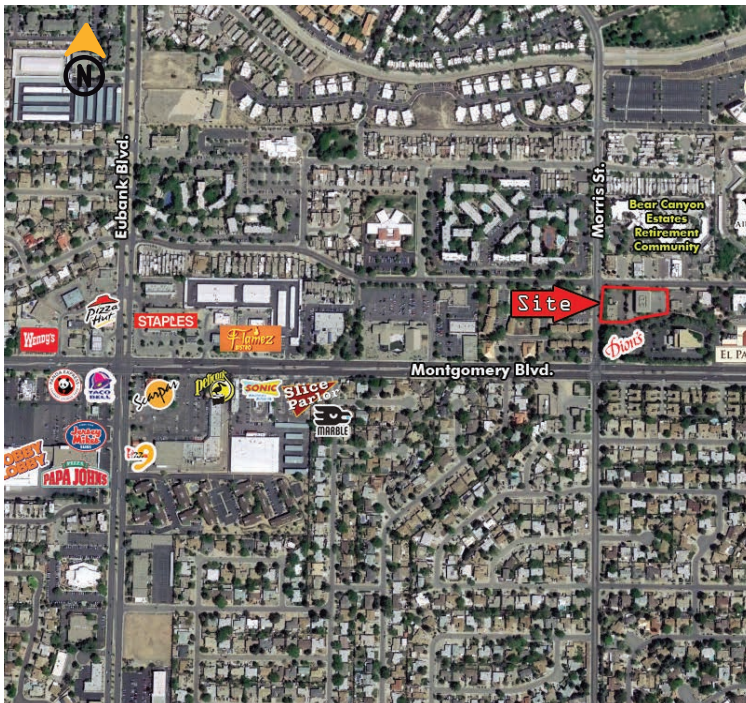
10401 Montgomery



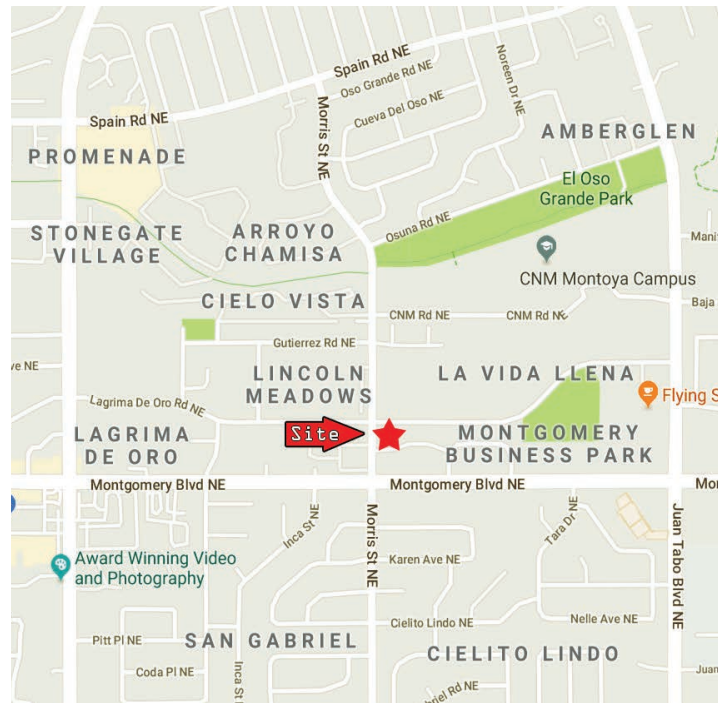
10409 Montgomery



Aerial Map



10401 & 10409 Montgomery Parkway NE, Albuquerque NM



Contact us

 Brighton Pope | 505.884.3578 | Brighton.Pope@PetersonProperties.net

