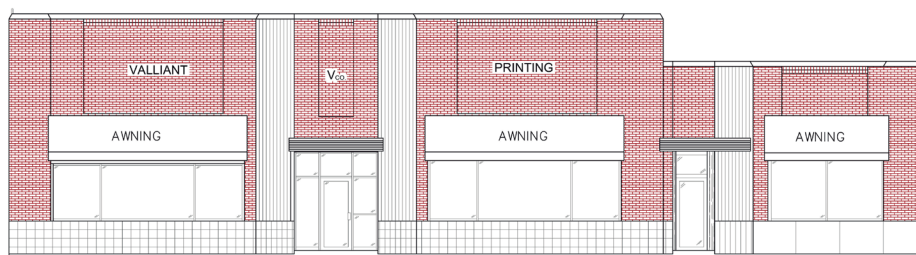




# 615 Gold SW

## Commercial Space

Albuquerque, NM - Downtown  
615 Gold Avenue SW



### Available

- 2,602 SF | \$3,000/Mo
- 13,972 SF | \$15,000/Mo



**Huge Surrounding  
Population**



**Parking Lot  
Adjacent**



**Active Nightlife  
Area**



**HUB Zone  
qualified location**

**Please contact us for leasing opportunities**



### Demographics

**1 Mile**

**3 mile**

**5 mile**

Population	14,049	96,593	249,517
Med. Income	\$30,407	\$34,357	\$37,683
Day Population	34,957	104,545	196,322



### Surroundings Info

- Near City Hall & Courthouse District.
- Free Surface Parking included.
- Locally owned and managed.
- A.R.T stop across the street.

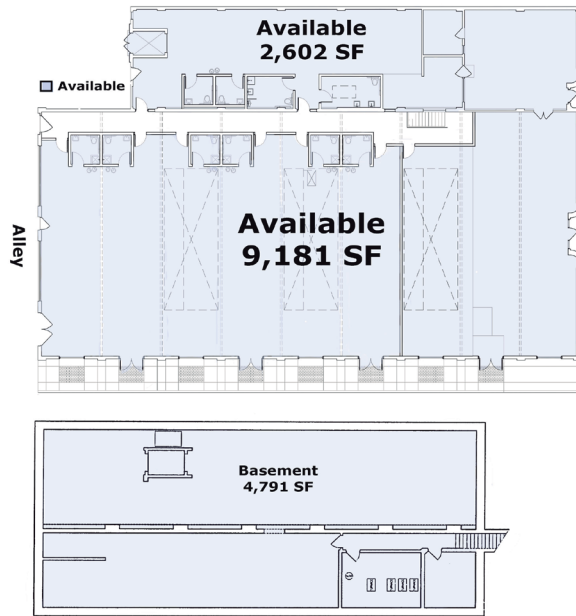


### Contact

• Brighton Pope  
• 505.884.3578  
• Brighton.Pope@PetersonProperties.net

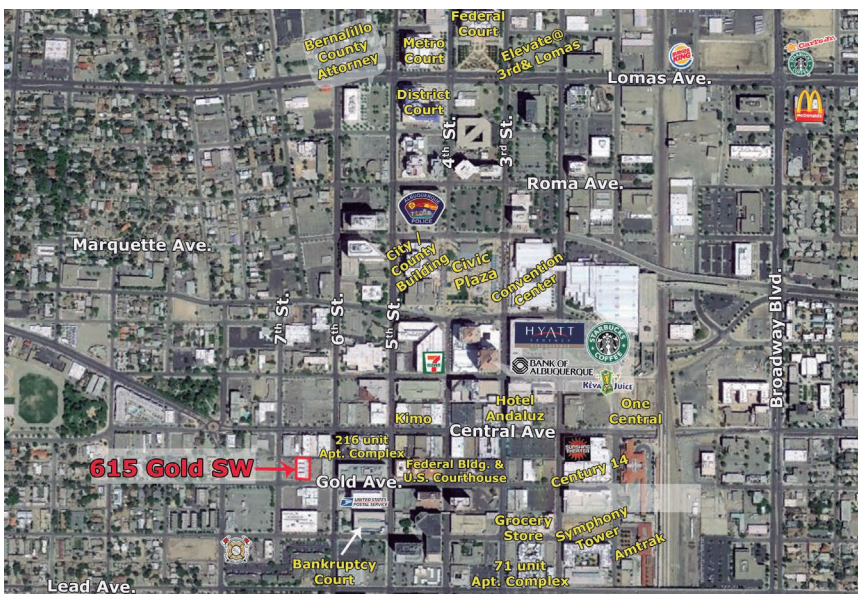
• **PetersonProperties.net**  
• /petersonpropertiesllc  
• /petersonpropertiesllc  
• /peterson.properties

### Site Plan

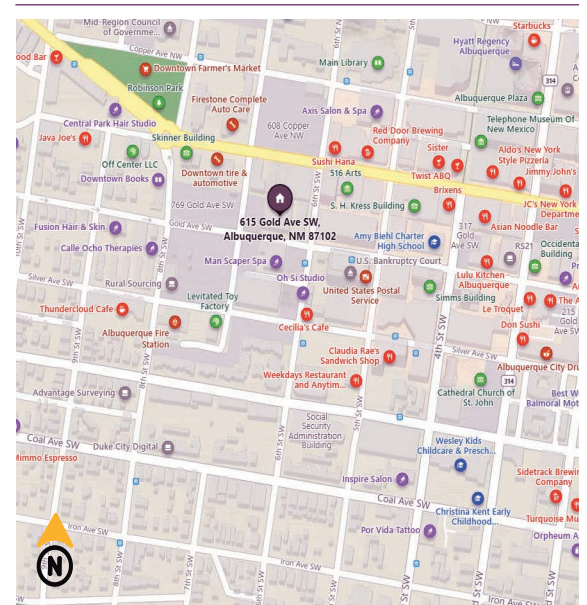


Please contact us for leasing opportunities

### Aerial Map



### 615 Gold Ave SW Albuquerque, NM



### Contact us

 Brighton Pope |  505.884.3578 |  Brighton.Pope@PetersonProperties.net

