





McMahon Marketplace

Commercial Center

Albuquerque, NM



 **Demographics**
1 Mile
3 mile
5 mile
 **Available**

Population	8,843	81,723	146,145
Med. Income	\$67,269	\$66,151	\$66,127

● 9C | 35,088 SF | \$9,995/Month




Please contact us for leasing opportunities

Surroundings Info

- Anchored by CVS Drugstore, McDonalds, Taco Bell, Anytime Fitness, Starbucks and Tractor Brewing.
- Underserved population.
- A 20-acre medical/retail plaza is underway opposite the location of Presbyterian Hospital 1 mile north of site.
- Food Truck Parking Available.
- A project in Los Diamantes will create 450 homes, 70-acre business park and school is expected to be completed during 2023.
- A 20 acre planned mixed use center will sit on the southwest corner of Unser & McMahon.
- 26,800 cars per day on Unser Blvd and 18,600 car per day on McMahon Blvd.
- Locally owned and managed.



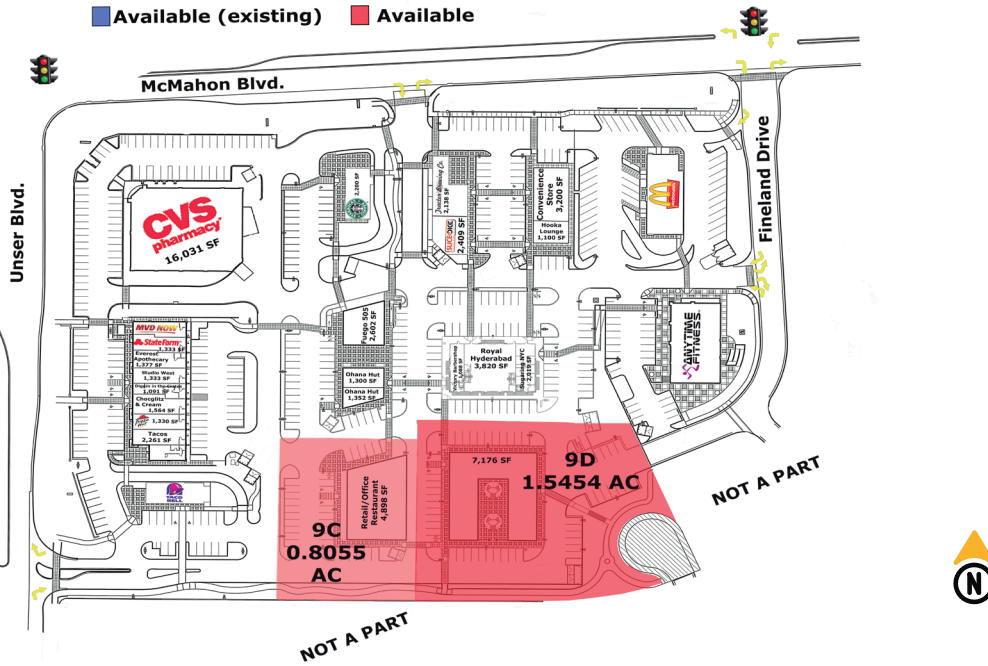
Contact

 Vanessa Smokov
 505.884.3578
 Vanessa@PetersonProperties.net

 PetersonProperties.net
 /petersonpropertiesllc
 /petersonpropertiesllc
 /peterson.properties



Site Plan

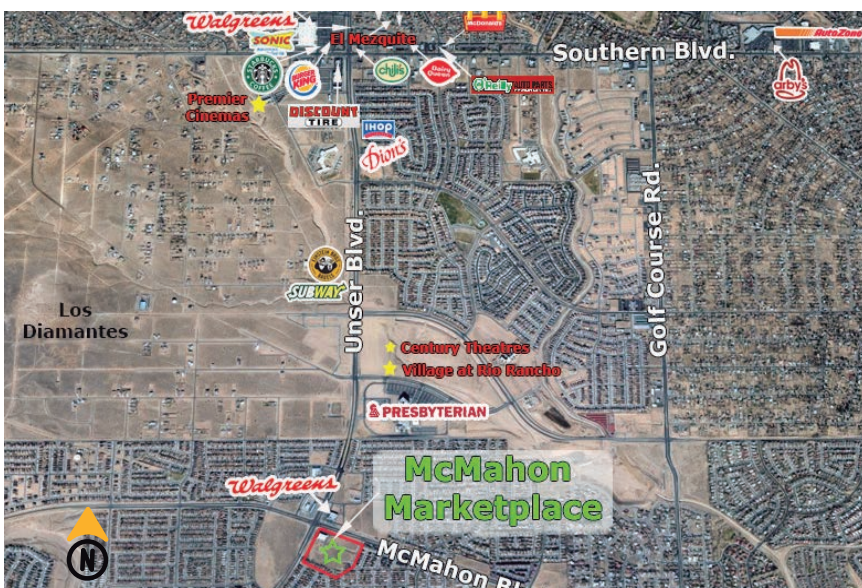


Please contact us for leasing opportunities



Aerial Map

5740-5770 McMahon Blvd. NW, Albuquerque, NM



Contact us

Vanessa Smokov

505.884.3578

Vanessa@PetersonProperties.net

