

### Albuquerque, NM - Far NE Heights

10401 & 10409 Montgomery Parkway NE



#### Demographics

#### 1 Mile

#### 3 mile

#### 5 mile

Population

13,364

140,998

319,333

Med. Income

\$43,826

\$39,499

\$41,743

Day Population

15,902

106,814

251,027

Please contact us for leasing opportunities



#### Available

#### 10401 Montgomery Parkway

- Suite 1J | 120 SF  
\$100/Mo
- Suite 1X+1Y | 770 SF  
\$500/Mo
- Food Truck Parking

#### 10409 Montgomery Parkway

- Suite 203G | 150 SF  
\$250/Month



#### Surroundings Info

- In a well established area.
- Great street appearance with prominent signs.
- Several restaurants and pubs nearby.
- Secured building entry & exit.
- Locally owned and managed.
- Long term, successful cotenants.



#### Contact

• Brighton Pope

• 505.884.3578

• Brighton.Pope@PetersonProperties.net

• [PetersonProperties.net](http://PetersonProperties.net)

• [/petersonpropertiesllc](https://www.facebook.com/petersonpropertiesllc)

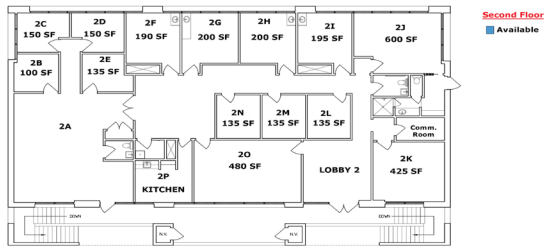
• [/petersonpropertiesllc](https://www.linkedin.com/company/petersonpropertiesllc)

• [/peterson.properties](https://www.instagram.com/peterson.properties)

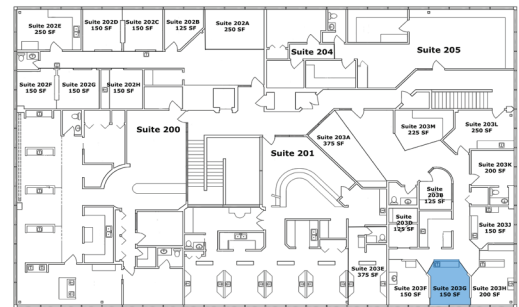
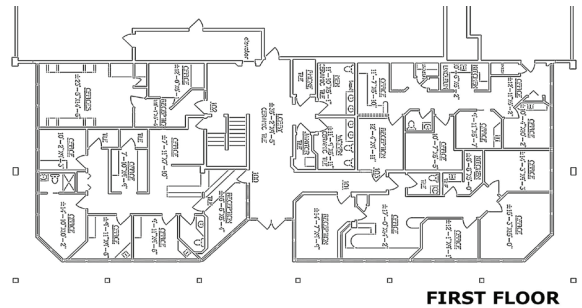
# Montgomery Parkway

## Office, Medical & Executive Suites

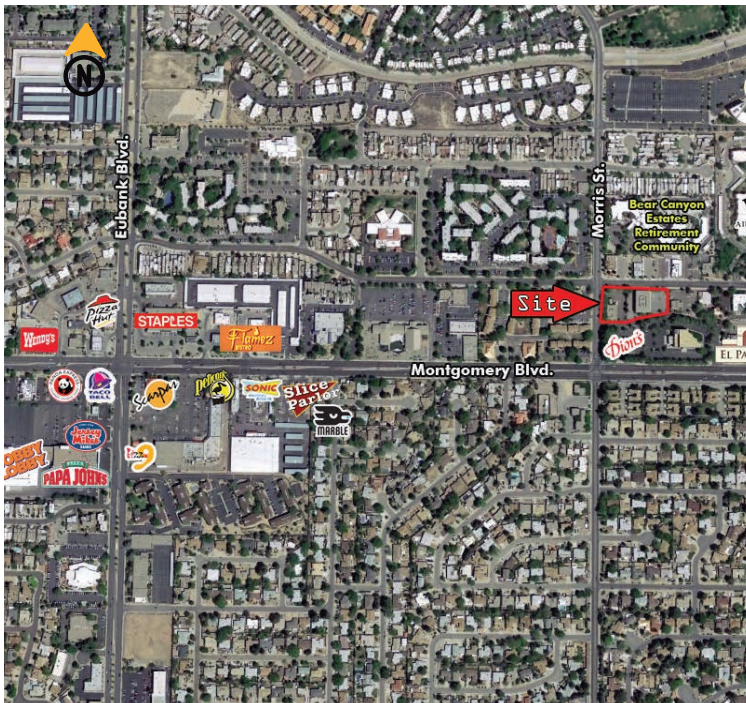
### 10401 Montgomery



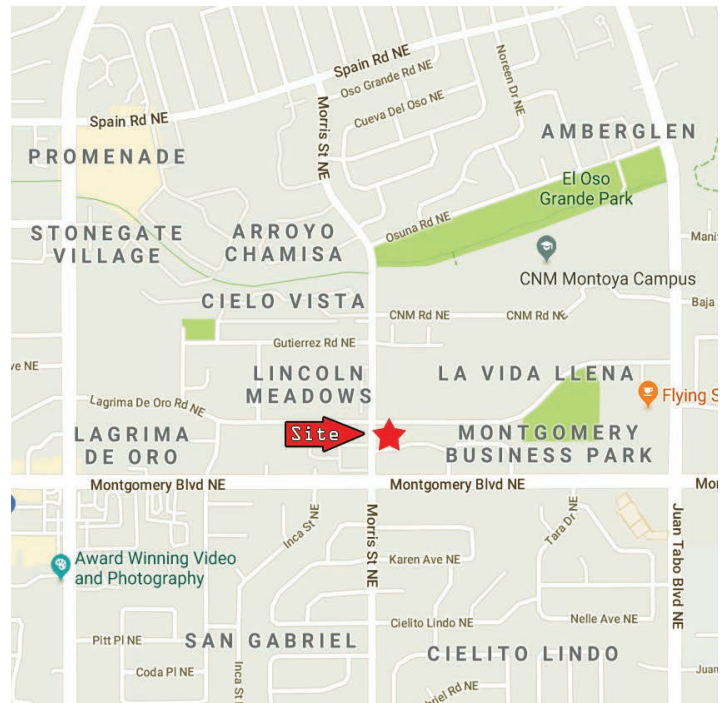
### 10409 Montgomery



### Aerial Map



### 10401 & 10409 Montgomery Parkway NE, Albuquerque NM



### Contact us

 Brighton Pope | 505.884.3578 | [Brighton.Pope@PetersonProperties.net](mailto:Brighton.Pope@PetersonProperties.net)

