


Albuquerque

7710 Menaul Blvd. NE



 Demographics	1 Mile	3 mile	5 mile
Population	13,662	148,889	318,784
Med. Income	\$45,489	\$41,296	\$43,655
Day Population	15,005	88,770	234,281

Please contact us for leasing opportunities

Available

- Suite A | 647 SF | \$1,406/Month
- Suite E | 369 SF | \$795/Month

Surroundings Info

- In the heart of Uptown retail & offices.
- Locally owned & managed.
- Excellent visibility of storefront.
- Large traffic flow on Menaul Blvd.



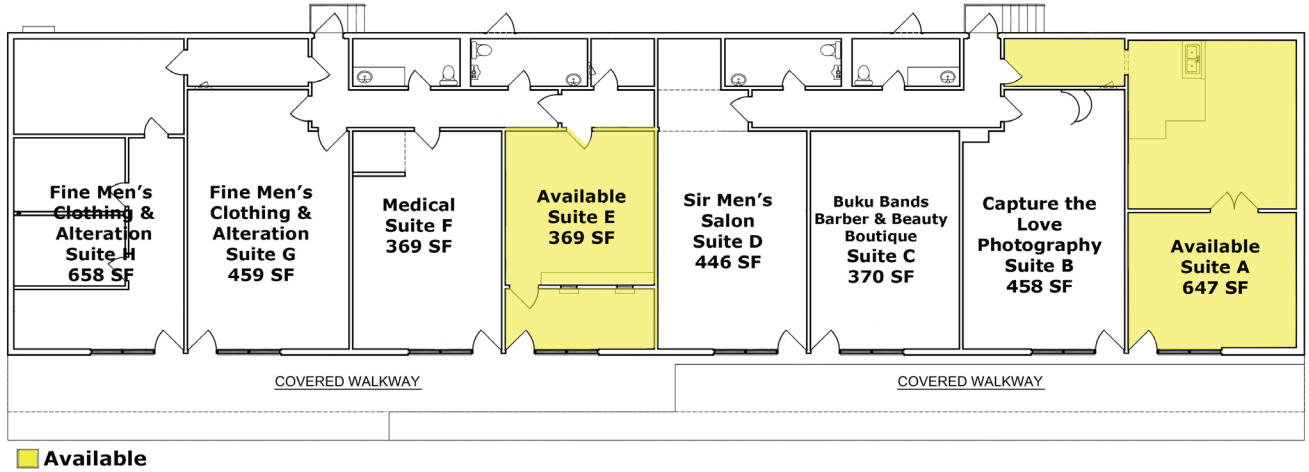
Contact

 Brighton Pope
 505.884.3578
 Brighton.Pope@PetersonProperties.net

 PetersonProperties.net
 /petersonpropertiesllc
 /petersonpropertiesllc
 /peterson.properties



Site Plan



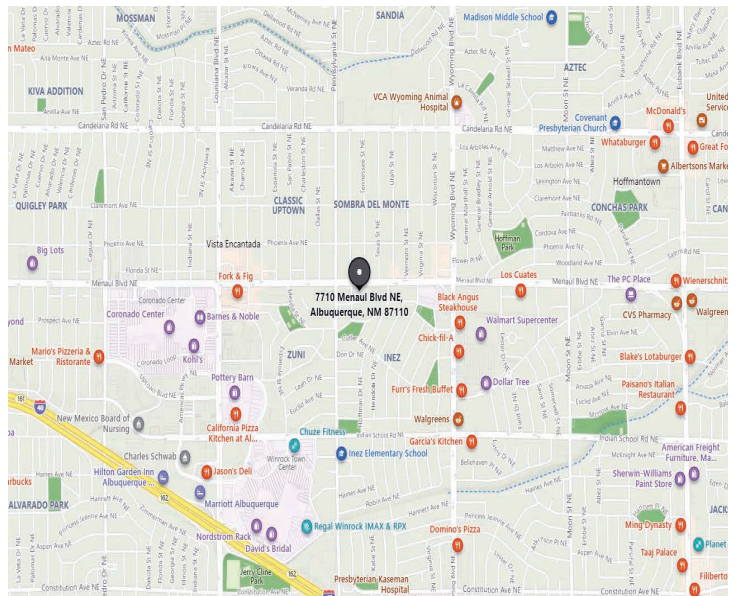
Please contact us for leasing opportunities



Aerial Map




7710 Menaul Blvd. NE Albuquerque, NM 87110



Brighton Pope

505.884.3578

Brighton.Pope@PetersonProperties.net



Contact us