


## Albuquerque

3802-3812 Central Ave. SE & 100 Solano Dr Ave SE



 Demographics	1 Mile	3 mile	5 mile
Population	9,683	81,081	174,352
Med. Income	\$30,370	\$35,131	\$36,255
Day Population	5,184	38,217	78,879

Please contact us for leasing opportunities

### Available

- 3802 | 1,920 SF | \$3,285/Month
- 3812-B1: Suite B-E | 335 SF - 1,200 SF  
\$360 - \$1,285/Month
- Apartments: 275 - 1,045 SF | \$500 - \$1,185/Mo
- Food Truck Parking Agreements

### Surroundings Info

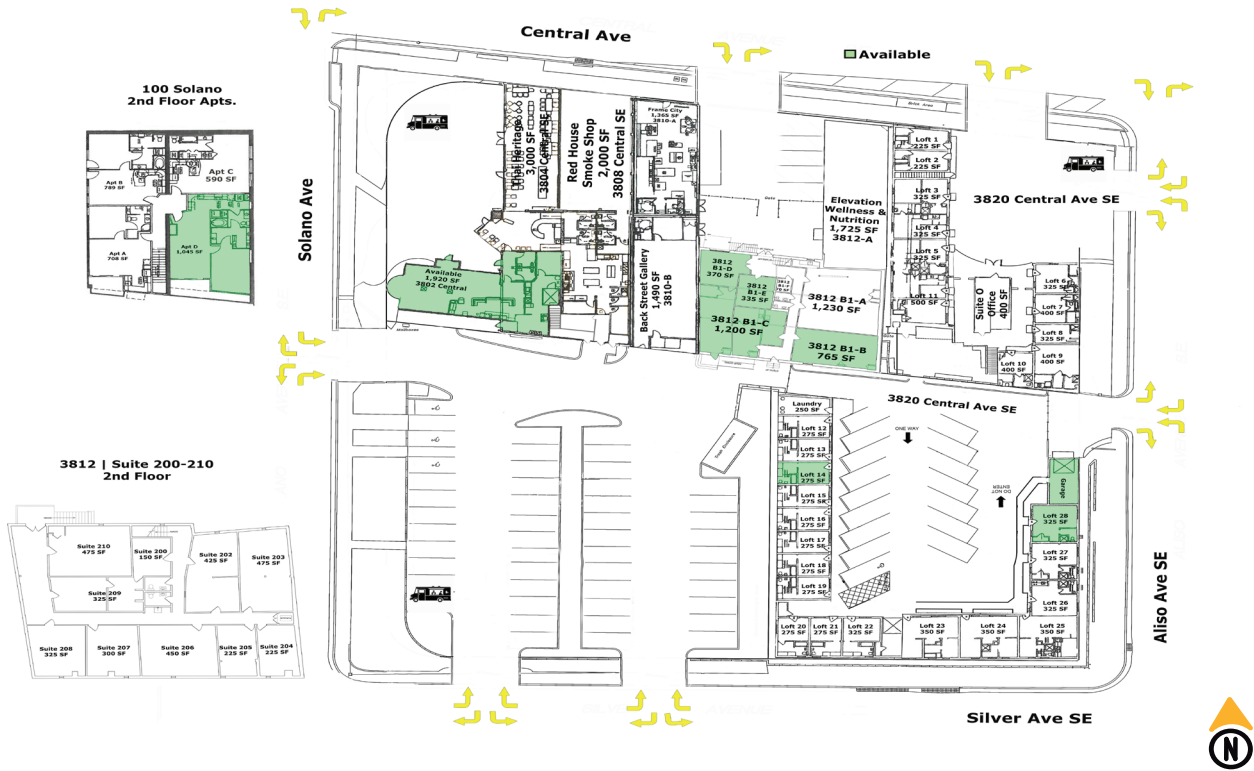
- Excellent Nob Hill location.
- Plenty of Parking.
- Prominent visibility from Central Ave.
- Many restaurants nearby.
- Locally owned and managed.



#### Contact


 Brighton Pope  
 505.884.3578  
 Brighton.Pope@PetersonProperties.net

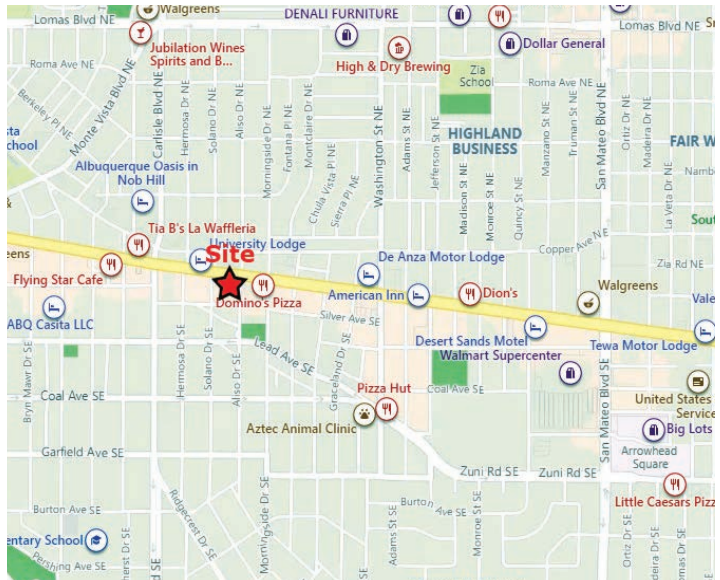
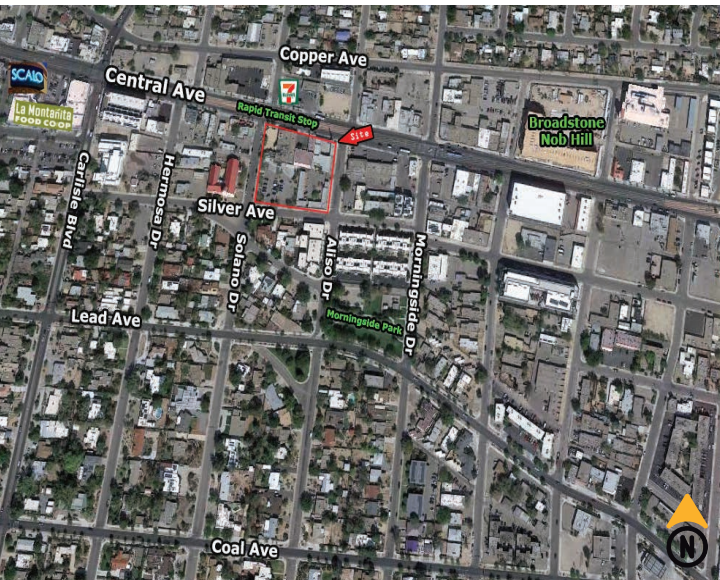
 [PetersonProperties.net](http://PetersonProperties.net)  
 /petersonpropertiesllc  
 /petersonpropertiesllc  
 /peterson.properties



Please contact us for leasing opportunities

 Aerial Map

 3802-3812 Central Ave. SE & 100 Solano Ave SE  
Albuquerque, NM 87108



 Brighton Pope

 505.884.3578

 Brighton.Pope@PetersonProperties.net

