

Albuquerque, NM



Demographics **1 Mile** **3 mile** **5 mile** **Available**

Population	8,843	81,723	146,145	<ul style="list-style-type: none"> ● Suite A+B 2,261 SF \$6,5755/Mo ● 9C 4,898 SF \$15,000/Mo Available 1/15/2027
Med. Income	\$67,269	\$66,151	\$66,127	

Please contact us for leasing opportunities

Surroundings Info

- Anchored by CVS Drugstore, McDonalds, Taco Bell, Anytime Fitness, Starbucks and Tractor Brewing.
- Underserved population.
- A 20-acre medical/retail plaza is underway opposite the location of Presbyterian Hospital 1 mile north of site.
- Food Truck Parking Available.
- A project in Los Diamantes will create 450 homes, 70-acre business park and school is expected to be completed during 2023.
- A 20 acre planned mixed use center will sit on the southwest corner of Unser & McMahon.
- 26,800 cars per day on Unser Blvd and 18,600 car per day on McMahon Blvd.
- Locally owned and managed.

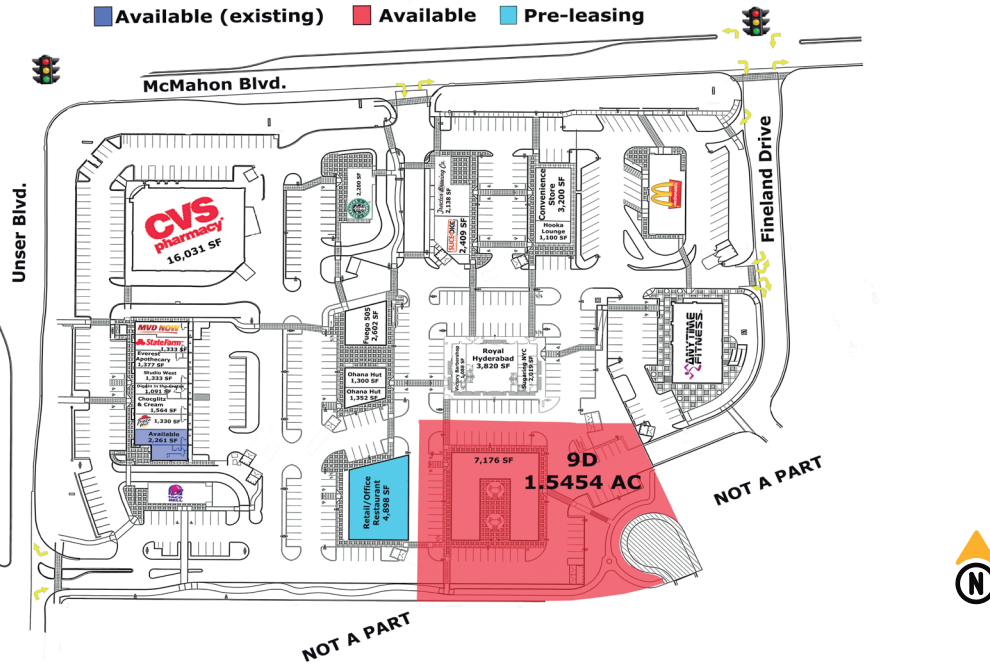


Contact
 ● Vanessa Smokov
 ● 505.884.3578
 ● Vanessa@PetersonProperties.net

● PetersonProperties.net
 ● [/petersonpropertiesllc](https://www.facebook.com/petersonpropertiesllc)
 ● [/petersonpropertiesllc](https://www.instagram.com/petersonpropertiesllc)
 ● [/peterson.properties](https://www.linkedin.com/company/petersonproperties)



Site Plan

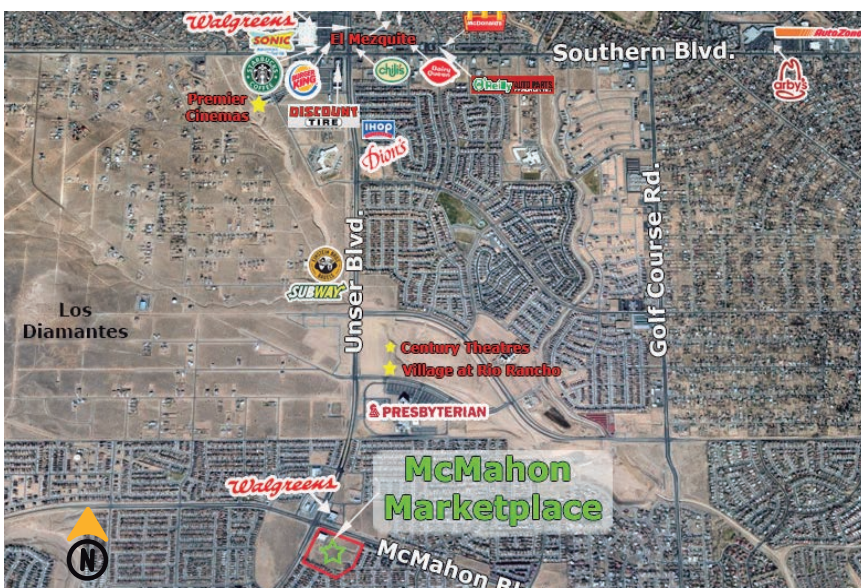


Please contact us for leasing opportunities



Aerial Map

5740-5770 McMahon Blvd. NW, Albuquerque, NM



Contact us

Vanessa Smokov

505.884.3578

Vanessa@PetersonProperties.net

