



Unser Shops & Pads

Northeast corner of Unser & Vista Oriente NW

Albuquerque, NM
2220 Unser Blvd. NW



Demographics

1 Mile

3 mile

5 mile

	1 Mile	3 mile	5 mile
Population	7,907	63,259	175,668
Med. Income	\$61,327	\$46,433	\$46,185

Please contact us for leasing opportunities



Available

- 2220 | 5,831 SF | \$14,300/Mo
- 1B1 | 55,055 SF | \$5,895/Mo
- 1B2 | 29,290 SF | \$9,795/Mo
- 1B4 | 138,255 SF | \$27,995/Mo



Surroundings Info

- Adjacent to Walgreens with cross access.
- Zoned NR-C.
- 550 Pulte Homes (Del Webb Mirehaven) south of the Petroglyph National Monument.
- All offsite improvements are complete.
- Locally owned and managed.



Contact

Vanessa Smokov
 505.884.3578
 Vanessa@PetersonProperties.net

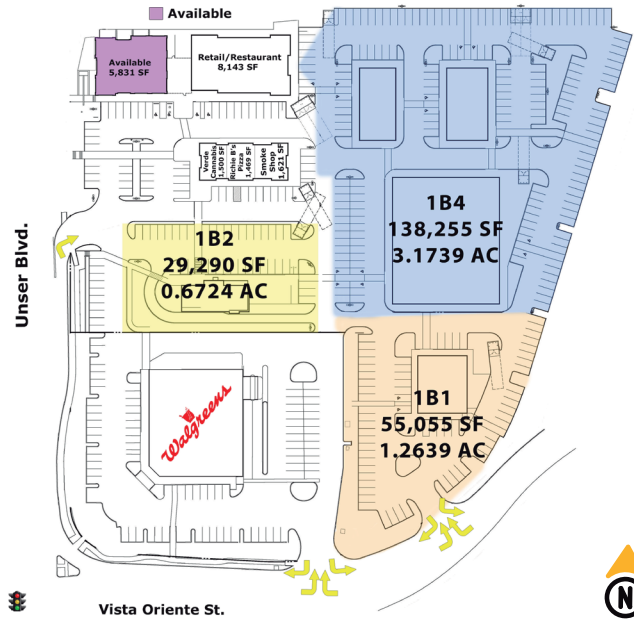
PetersonProperties.net
 /petersonpropertiesllc
 /petersonpropertiesllc
 /peterson.properties



Unser Shops & Pads

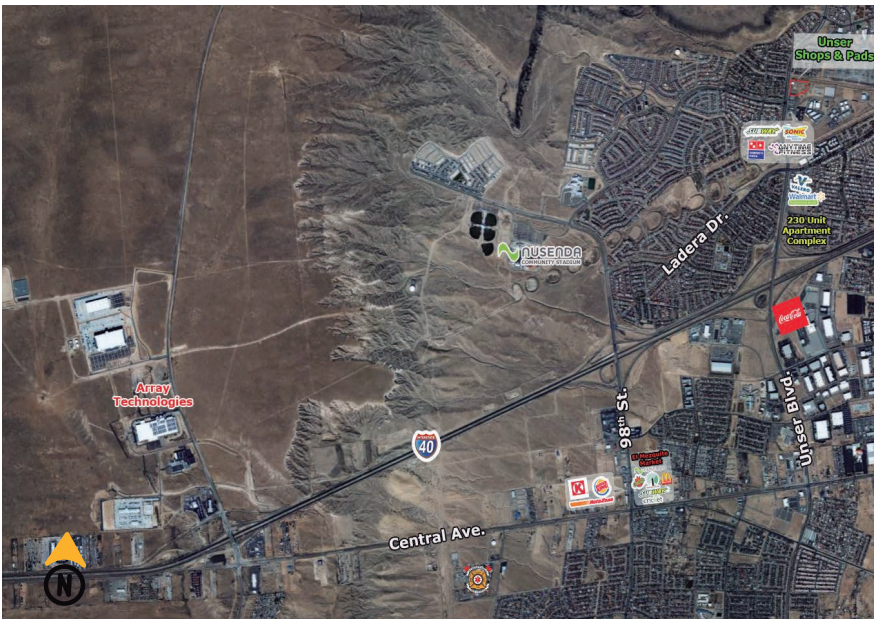
Northeast corner of Unser & Vista Oriente NW

Site Plan

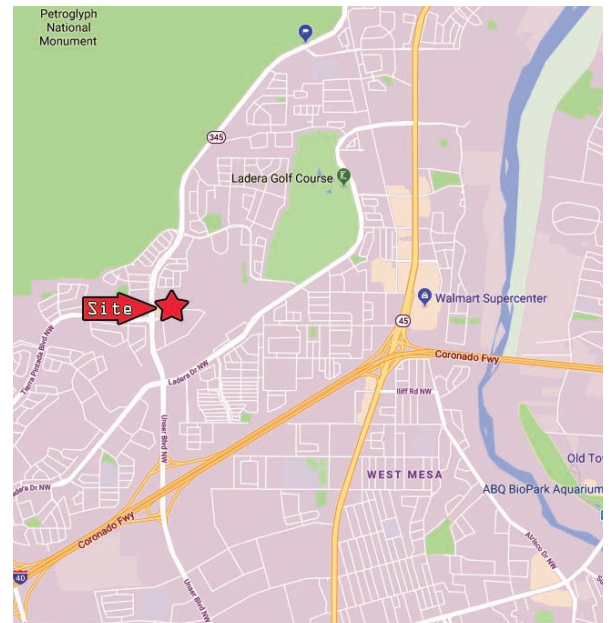


Please contact us for leasing opportunities

Aerial Map



Northeast corner of Unser Blvd. & Vista Oriente St.



Contact us

Vanessa Smokov

505.884.3578

Vanessa@PetersonProperties.net

